

**SIGMA**

PRODUCT GUIDE



**CIVIL AND INFRASTRUCTURE**

20  
25

**SIGMA ENTERPRISES**  
YOUR LOCAL PARTNER FOR GLOBAL TECHNOLOGY SOLUTION



A MAZRUI INTERNATIONAL COMPANY

# SIGMA OVER THE YEARS

Mr. Abdullah Mohammed Al Mazrui founded the Mazrui Engineering Products with major focus on Construction and Building materials business.

1972

Founding of the Mazrui Group Holding company with expansion of operating business into Oil & Gas, Real Estate, Trading, Financial Investments, Education, Construction & Logistics, and Retail.

2001

Regrouping of Mazrui Engineering Products and formation of SIGMA Enterprises in Dubai under the Mazrui Group Trading Business Unit.

2006

Establishing of SIGMA headquarters in Dubai Investments Park 1 with a fully equipped corporate office, sales office, service center, training center, logistics hub and warehouse.

2008

SIGMA along with three other group formed the Mazrui Trading Sector Companies whose primary business focus is on import, distribution, and marketing.

2016

Successfully launched Evident Regional Service Centre at Sigma facility and officially inaugurated revamped SIGMA Service Centre dedicated to be the authorized service provider in the UAE and GCC region for all brands in our portfolio, also featuring a dedicated Training and Demo Centre.

2022

Established as one of the leading distributor and service provider for 45+ leading engineering brands from around the world introducing innovative and cutting-edge technology to more than 1000 clients in the UAE and GCC region.

PRESENT

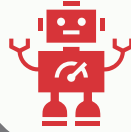
The logo for SIGMA, featuring the word "SIGMA" in a bold, black, sans-serif font. A red, curved swoosh underline is positioned beneath the letters "I" and "M".

# COMPANY PROFILE

Sigma Enterprises is a **leading distributor and service provider of a diverse range of scientific and engineering technologies across the UAE and GCC countries.** An ISO 9001:2015 certified company, Sigma is part of Mazrui International, one of the UAE's most esteemed family-owned businesses.

Over the years, we have expanded our portfolio with innovative and cutting-edge technology solutions, ventured into new markets, and established a state-of-the-art Service and Calibration Centre, earning a reputation as a trusted name in the region.

SIGMA currently offers solutions across various application segments, including Robotics, Drones & Mapping Solutions, NDT Inspection, Material Science & Civil Testing, Advanced Positioning & Surveying Instruments, Construction Technology & Power Generation and a fully functional Service and Calibration Centre.

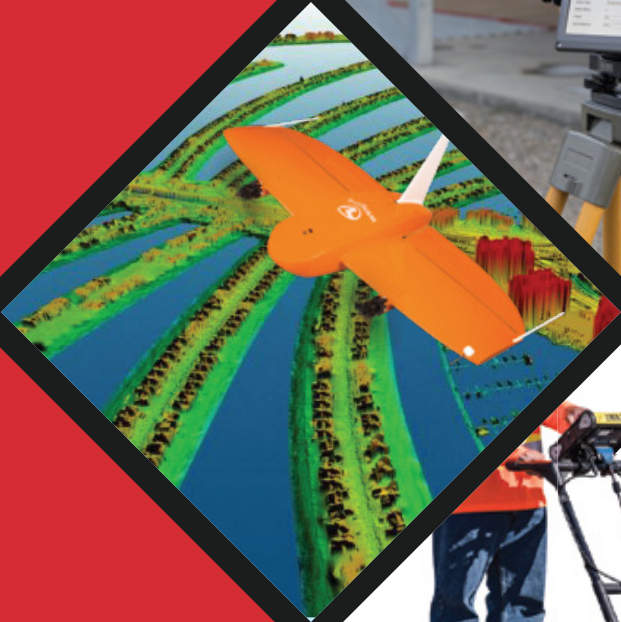




# OUR TEAM

# CATEGORIES

▶ Drone and Mapping Solutions	07
▶ Surveying Instruments	08
▶ Utility Inspection	09
▶ Surface Preparation	11
▶ Light Construction Machinery	12
▶ Power Generation	12
▶ Concrete & Cement Testing	14
▶ Concrete NDT	15
▶ Asphalt Testing	16
▶ Soil & Rock Mechanics	17
▶ Drilling Fluid & Oil Well Cement Testing	18
▶ Material Science	19
▶ Metrology	20
▶ Robotic Solutions	22
▶ NDT Inspection	23
▶ Welding Consumables and Fume Extraction	24
▶ ATEX rated Pneumatic Tools	24
▶ General Laboratory Testing	25



# SURVEYING AND MAPPING

# DRONE AND MAPPING SOLUTIONS

 wingtra



**AERIAL MAPPING DRONE -  
PHOTOGRAMMETRY**

 wingtra



**AERIAL MAPPING DRONE - LIDAR**

 FLYABILITY



**INDOOR MAPPING DRONE**





**WEARABLE MOBILE  
MAPPING SYSTEM**






**HANDHELD MOBILE  
MAPPING SYSTEM**

 XenomatiX  
True solid state lidar



**MOBILE ROAD PROFILE LIDAR  
AND LASER SCANNER**

**CONTACT US**

 800 6373

 [marketing@sep.ae](mailto:marketing@sep.ae)



# UTILITY LOCATION

RADIODETECTION 



CABLE AVOIDANCE TOOL

RADIODETECTION 



PRECISION LOCATOR

SCHONSTEDT   
from RADIODETECTION



METAL AND MAGNETIC  
LOCATORS

RADIODETECTION 



PIPELINE INTEGRITY AND  
CORROSION CONTROL

PEARPOINT 



PIPELINE INSPECTION

SENSORS & SOFTWARE   
from RADIODETECTION



GROUND PENETRATING RADAR



# CONSTRUCTION TECHNOLOGY & POWER GENERATION

# SURFACE PREPARATION



FLOOR SCARIFIER - TRELAWNY



FLOOR GRINDER - DUAL DISC



PLANETARY CONCRETE  
FLOOR GRINDERS



INDUSTRIAL DUST COLLECTOR



HAND SCABLERS



FLOOR SCABLERS

# LIGHT CONSTRUCTION MACHINERY



**NORTON**  
SAFETY SYSTEM  
*clipper*

**MASONRY SAW**



**NORTON**  
SAFETY SYSTEM  
*clipper*

**BAND SAW**



**CU**

**HIGH FREQUENCY  
CONVERTER & POKERS**



**TOWER LIGHTS**

# POWER GENERATION



**KOHLER.**

**DIESEL ENGINE**



**VEGO**

**DE-WATERING PUMPS**



# MATERIAL SCIENCE & CIVIL TESTING

# CONCRETE & CEMENT TESTING



**CONCRETE COMPRESSION  
MACHINE**



**CONCRETE FLEXURAL  
TESTING MACHINE**



**CEMENT COMPRESSION MACHINE**



**CONCRETE AIR METER**



**AUTOMATIC BLAINE APPARATUS**



**AUTOMATIC VICAT APPARATUS**

# CONCRETE & CEMENT TESTING



**AUTOCLAVE**



**CONCRETE PAN MIXER**

# CONCRETE NDT



**REBOUND HAMMER**



**ULTRASONIC PULSE VELOCITY**



**GROUND PENETRATING RADAR**



**PROFOMETER & COVER METER**

# ASPHALT TESTING

**ThermoFisher**  
SCIENTIFIC



ASPHALT IGNITION FURNACES

**ELE**  
INTERNATIONAL



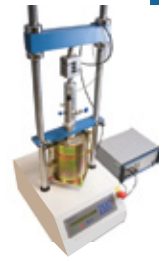
ASPHALT CENTRIFUGE EXTRACTORS

**ELE**  
INTERNATIONAL



MIXING

**ELE**  
INTERNATIONAL



MARSHALL TESTING MACHINE

**ELE**  
INTERNATIONAL



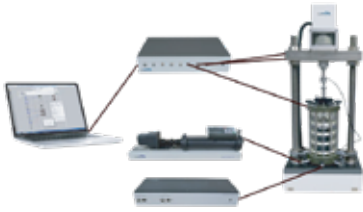
AUTOMATIC MARSHALL  
COMPACTOR

**ELE**  
INTERNATIONAL



CORE DRILLING

# SOIL & ROCK MECHANICS



**DYNAMIC TRIAXIAL TESTING**



**STATIC TRIAXIAL TESTING**



**SHEAR TESTING**



**RESONANT COLUMN**



**COMPACTION & CBR  
TEST EQUIPMENT**



**SOIL OVEN**

# DRILLING FLUID & OIL WELL CEMENT TESTING

**fann®**



MUD BALANCE

**fann®**



LUBICITY METER

**fann®**



RHEOMETER

**fann®**



CEMENT ANALYZER

**fann®**



VISCOMETER

**fann®**



HPHT CONSISTOMETER

# MATERIAL SCIENCE



UNIVERSAL TESTING MACHINES



DYNAMIC & FATIGUE TESTING SYSTEMS



MINERALOGY/THIN SECTION



METALLURGICAL SAMPLE PREPARATION



HARDNESS TESTING



OPTICAL EMISSION SPECTROMETER

# MATERIAL SCIENCE

**EVIDENT**



**DIGITAL MICROSCOPES**

**WITec**  
focus innovations



**RISE – RAMAN-SEM MICROSCOPES**

# METROLOGY

**CREAFORM**



**3D LASER SCANNER**

**baty**



**PROFILE PROJECTOR**

**Mahr**



**HANDHELD GAUGES**

**Mahr**



**LENGTH MEASURING MACHINE**



**NDT INSPECTION SOLUTION**

# ROBOTIC SOLUTIONS



**AUTONOMOUS ROBOTIC INSPECTION**



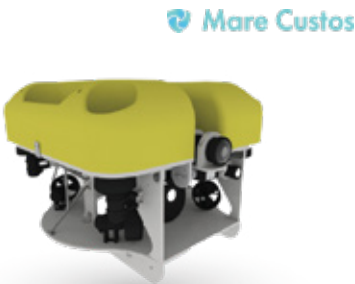
**AUTONOMOUS ROBOTIC INSPECTION - EX PROOF**



**INDOOR UT INSPECTION DRONE**



**REMOTE UT INSPECTION DRONE**



**ROV WITH UT INSPECTION**



**DRONE IN A BOX**

# NDT INSPECTION

EVIDENT



ULTRASONIC THICKNESS GAUGE

EVIDENT



PHASED ARRAY INSPECTION

EVIDENT



XRF ANALYZER FOR MINING & GEOCHEM

Fischer



COATING INSPECTION

Fischer



FERRITE CONTENT MEASUREMENT

Sorama



ACOUSTIC SENSORS FOR LEAK DETECTION

## WELDING CONSUMABLES AND FUME EXTRACTION



**NEWARC**

**WELDING MACHINE**



**NEWARC**

**TIG CONTROL UNIT**



**Weldability**

**GAS CONTROL & WELDING EQUIPMENT**



**Weldability**

**PORTABLE FUME EXTRACTION SYSTEM**

## ATEX RATED PNEUMATIC TOOLS



**TRELAWNY**



**DE-SCALER**

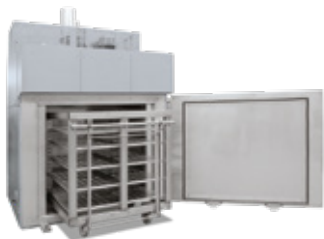


**TRELAWNY**



**DECK HAMMER**

# GENERAL LABORATORY TESTING



CHAMBER OVENS



OVENS



MUFFLE FURNACES



ROTATORS, SHAKERS AND MIXERS



CONCRETE THERMOMETERS



THERMOMETERS

# GENERAL LABORATORY TESTING

ascott



CYCLIC CORROSION CABINET



WEIGHING SCALES

Genlab



WATER BATH

Genlab



THIN FILM OVEN

Endecotts



SIEVES & SIEVE SHAKER



LAB FURNITURES

# SERVICE CENTER



We deliver the world's leading-edge nondestructive inspection and measurement solutions by developing tools and technologies that enhance safety, security, quality, and productivity.



**Sigma** believes in associating with our customers, not just as a supplier, but as a partner in business.

We differentiate ourselves by delighting our customers with the following services:

- Calibration services
- Warranty services
- Mobile repair services
- Equipment installation
- Annual maintenance contract
- Genuine spare parts availability

Our Service Center is the regional hub for the full after-sales service requirements.

HOLD THE VISION.  
TRUST THE PROCESS.



## OUR PARTNERS


### Our Locations

Dubai  
Sigma Enterprises LLC  
Dubai Investment Park 1  
P.O.Box: 96241  
Dubai, United Arab Emirates  
Tel: +971 4 81 78 666  
Fax: +971 4 88 51 628

Abu Dhabi  
Sigma Enterprises Trading LLC  
Mussafah / M 17 – 4 Al Thiqa  
St. 2 Mussafah, Building number 5  
Abu Dhabi, United Arab Emirates  
P.O.Box: 109806  
Tel: +971 2 55 11 433  
Fax: +971 2 55 11 477

FOLLOW US ON



LINK TO OUR WEBSITE

