



BAUPOWERGROUP

K R A F T A M B A U

CONSTRUCTION TECHNOLOGY

2020



SWISS QUALITY

MECHANICAL POKER VIBRATOR WITH DRIVE UNIT

- Powerful Heavy Duty Mechanical Driven Poker Vibrator
- Heavy Duty Double Spiral Hose
- Induction hardened magnesium steel alloy
- Reinforced steel hose reinforced by 6 layers of special spun steel
- High vibrating power
- Long working life, wear resistance and reliability
- Easy operation and compatibility
- No special maintenance
- Dynapac coupling or Hagashi coupling
- 45mm, 55mm & 65mm is also available with length of 12 metre shaft



Drive Unit



Dynapac Coupling Type

TECHNICAL DATA	AVP 25	AVP 35	AVP 45	AVP 55	AVP 65
Tube Diameter (mm)	25	35	45	55	65
Tube Weight (kg)	0,6	1,3	2,3	2,7	6,3
Total Weight (kg)	10	12,2	16,5	17,5	21,5
Tube Length (mm)	301	307	340	381	426
Flexible Shaft Length (m)	6	6	6	6	6
Total Length (m)	6,3	6,4	6,4	6,4	6,5
Amplitude (mm)	0,8	1,2	1,2	1,2	1
Frequency (rpm)	12.000	12.000	12.000	12.000	12.000

Frequency is considering speed of drive unit to be 2800rpm

TECHNICAL DATA – DRIVE UNITS	Honda GX 160	Robin EY -20	Lombardini 15LD
Fuel	Gasoline	Gasoline	225
Output Power Max.	3.6kW , 4.8hp	3.7 kW, 5 hp	Diesel
Frequency (rpm)	2800	3600	3600
Dimensions (L/W/H)	445x420x520	303x326x392	310x215x430
Weight (kg)	21	20	31

HIGH FREQUENCY POKER VIBRATOR

The solution for the hardest challenges in the field of concrete compaction:

- Maximum power makes fast reliable compaction possible
- Full motor protection by means of thermo-control.
- Warranty 2 years!
- Reliable bearings
- Quick replacement of spares without special tools
- Protection of form possible with optional vulkollan tip
- Replacement of cap possible without opening the bottle.
- Ideal lubrication and cooling with oil
- Service-friendly by modular construction.
- Shock-proof handswitch
- We do our best to satisfy the individual needs of our customers not only with regard to voltage, length of cables and hoses



TECHNICAL DATA	PEA 30 H	PEA 37 HN	PEA 47 H	PEA 57 H	PEA 65 H
Diameter (mm)	31	38.5	51	59	65
Length (mm)	320	370	390	360	340
Vibrations (1/min)	12000	12000	12000	12000	12000
Amplitude (mm)	1.8	1.8	2.4	2.4	2.5
Voltage (V/Hz)	48/200	48/200	48/200	48/200	48/200
Output (kVA)	0.7	0.85	1.4	2	2
Nominal current (A)	10	12	20	28	28
Weight bottle/total (kg)	1.7 / 8.1	2.8 / 9.8	4.8 / 14.6	6 / 15.4	7.2 / 16.8
plug type	CEE	CEE	CEE	CEE	CEE

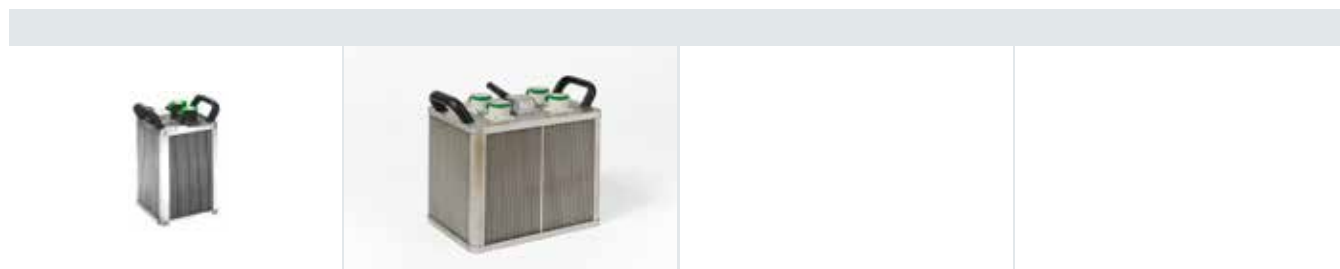
TECHNICAL DATA	PEA 65 HL	PEA 80 H
Diameter (mm)	66	81
Length (mm)	510	445
Vibrations (1/min)	12000	12000
Amplitude (mm)	2.5	3.2
Voltage (V/Hz)	48/200	48/200
Output (kVA)	2.8	4
Nominal current (A)	38	55
Weight bottle/total (kg)	9.2 / 18.7	15 / 29
plug type	CEE 63 A	CEE 63 A

HIGH FREQUENCY CONVERTER

- Enormous power reserve by high peak currents
- Light weight, compact and functional for sites
- Self insured by thermal, phase failure and overload protection



PEA 4.0



Mini 24

Mini 60

ELECTRONIC CONVERTERS

TECHNICAL DATA	MINI 10	MINI 24	MINI 60
power (KVA)	2	3	5.5
voltage output (V / Hz)	42/200	40/200	42/200
max. current output (A)	30	40	70
voltage input (V / Hz)	230/50-60	230/50-60	230/50-60
sockets CEE	1	2	4

ELECTRO-MECHANIC CONVERTERS

TECHNICAL DATA	PEA 3.0	PEA 4.0	PEA 5.5	PEA 7.5
power (KVA)	3	4	5.5	7.5
voltage output (V / Hz)	42/200	42/200	42/200	42/200
max. current output (A)	40	55	76	104
voltage input (V / Hz)	400/50	400/50	400/50	400/50
sockets CEE	2	3	3	4

MINI INTEGRATED FREQUENCY POKER

- The Mini 4 line can be connected directly to 230 V AC
- Light weight, compact and functionable for sites
- Self insured by thermal, phase failure and overload protection
- Poker vibrator up from 0.8 m of protective hose possible
- Inveter suitable as spare part
- Mountable to all 250 V AC vibrator bottles
- Highest output in the market



Integrated frequency

TECHNICAL DATA	MINI 4 PEA 30	MINI 4 PEA 37	MINI 4 PEA 47	MINI 4 PEA 57
Dimensions inverter (mm)	210x123x75	210x123x75	210x123x75	210x123x75
Diameter vibrator bottle (mm)	31	39	50	59
Length vibrator bottle (mm)	320	370	390	360
Frequency (1/min)	12000	12000	12000	12000
Amplitude (mm)	1.8	1.8	2.4	2.4
Centrifugal force (N)	1400	1500	3600	5400
Voltage (V)	230 / 1 Phase	230 / 1 Phase	230 / 1 Phase	230 / 1 Phase
Max. current (A)	3.5	3.7	6.1	7
Output (kVA)	0.8	0.85	1.4	1.7
Total weight (kg)	11.7	13	17	17.7

PNEUMATIC POKER VIBRATOR

- Powerful Heavy Duty Air Poker
- Heavy Duty Single Piece Rotor
- High Amplitude under full load with constant frequency
- Poker Head & Rotor is made of High Grade Resistant Steel
- Has In-line Oiler, providing permanent lubrication
- Wide Range of Head Sizes available from 25mm to 105mm

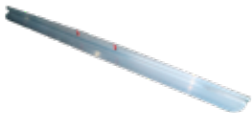


TECHNICAL DATA	EAP 25	EAP 35	EAP 45	EAP 55
Tube Diameter (mm)	28	35	45	55
Tube Weight (kg)	0,7	1,5	2,8	4,5
Tube Length (mm)	254	267	316	344
Amplitude (mm)	0,5	0,6	0,6	0,8
Frequency (rpm)	21.000	19.000	18.000	18.000
Air Consumption (m3/mm)	0,36	0,46	0,7	1
Hose Length (m)	4	4	4	4

TECHNICAL DATA	EAP 65	EAP 75	EAP 85	EAP 105
Tube Diameter (mm)	65	74	86	105
Tube Weight (kg)	7,9	8,9	9,71	7,72
Tube Length (mm)	365	398	410	415
Amplitude (mm)	0,9	1,2	1,8	1,9
Frequency (rpm)	17.500	16.000	15.900	15.000
Air Consumption (m3/mm)	1	1,3	1,6	1,9
Hose Length (m)	4	4	4	4

SCREED MACHINE – EZSCREED

- Professional Screed with Smooth Finish
- High Power 4 Stroke Honda Engine for Superior Performance & Reliability
- Light Weight & Easy to Handle
- Quick Change of Profiles
- Workable Even in Corners & Edges
- L- Type Profile
 - Available in Lengths from 1.8m to 6.2m:
 - 1.8m
 - 2.5m
 - 3m
 - 3.6m
 - 4.25m
 - 5m
 - 6.2m



L-Profile

TECHNICAL DATA	EZSCREED
Compaction Depth (mm)	85
Frequency (Hz)	90
Drive Motor	HONDA GX 35
Output Power	1KW, 1.3HP
Dimensions (LxWxH) (mm)	990X400X710
Operating Weight (kg)	14

POWER TROWEL

- Superior Power Trowel with Powder Coat Finish & Auto Cut-Off
- Anti- Vibration Handle to Reduce vibration transmitted to operator
- Comfort pad to cushion operator
- Lift-Up Side Guards Help Trowelling right to walls
- Chrome plated blades for Easy Maintenance & Cleaning
- Dead Man Switch for Superior Safety
- Central Lifting Hook for Easy Transportation



PowerTrowel with handle

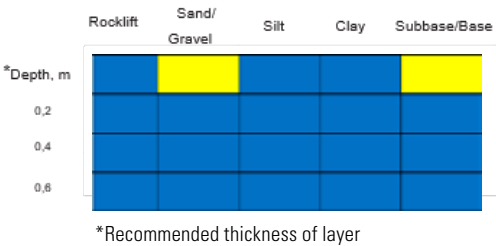


Dead Man Switch Cut Off

TECHNICAL DATA	PT 600	PT 900	PT 1200
No. of Blades	4	4	4
Clutch	Centrifugal	Centrifugal	Centrifugal
Trowelling Area (m2)	0,28	0,64	0,97
Trowel Speed (rpm)	60-120	60-120	60-135
Drive Motor	Honda Petrol GX 160 - 1 cyl	Honda Petrol GX 160 - 1 cyl	Honda Petrol GX 270 - 1 cyl
Output Power	3.6kW, 4,8hp	3.6kW, 4,8hp	6.3KW,8.5hp
Dimensions (LxWxH) (mm)	1300x600x990	2070x992x1050	2140x1205x1050
Operating Weight (kg)	75	95	120

FORWARD PLATE COMPACTOR - ECONOMIC RANGE

- Mid- Weight Professional Heavy Duty Plate Compactor
- Multi-purpose Professional Comapction plate
- Rugged Design for Heavy Duty Application
- High Compaction & Superior Compactor Speed
- Ideal for Heavy Soil Conditions
- Casted 8mm Thick Single Base plate for Long Durability & Reliability
- Minimal welding ensures maximum power transmission from drive to Plate
- Available in 3 base plate width sizes of 350mm , 400mm & 450mm



TECHNICAL DATA	LCPC 350	LCPC 400	LCPC 450
Plate Size (LxW) (mm)	690x350	690x400	690x450
Centrifugal Force (kN)	14	15	15
Operating Speed (m/min)	24	24	24
Max Gradeability	30	30	30
Frequency (Hz)	92	95	90
Compaction Area (m2/hr)	300-400	600	600
Drive Motor - Engine	Honda Petrol GX160 - 1 cyl	Honda Petrol GX160 - 1 cyl	Honda Petrol GX160 - 1 cyl
Output Power	3.6kW, 4.8hp	3.6kW, 4.8hp	3.6kW, 4.8hp
Dimensions (LxWxH)	840x350x1055	840x400x1055	840x450x1055
Operating Weight (kg)	68,5	71,5	74

FORWARD PLATE COMPACTOR - PREMIUM RANGE

- Heavy Duty Professional Range Forward Plate Compactor
- Low-Vibration Handle Design for Superior Handling
- Ergonomic Design for Optimum Weight Distribution
- Heavy Duty, Rugged Design, Ideal for Repair of Sand & Gravel
- Superior Performance by Eccentric Mass Measured to Weight of Machine
- Excellent Gradeability
- Comes with Transporter Wheel & Water Tank as options



Side view



Water tank

TECHNICAL DATA	FPC 115 B	ROADMASTER 115 B	FPC 115 D	ROADMASTER 115 D
Plate Size (LxW) (mm)	450x610	450x610	450x610	450x610
Centrifugal Force (kN)	20	20	20	20
Operating Speed (m/min)	21	21	21	21
Max Gradeability	20	20	20	20
Frequency (Hz)	92	92	92	92
Compaction Area (m ² /hr)	400-500	400-500	400-500	400-500
WaterTank	Yes	No	Yes	No
Transporter Wheel	Yes	No	Yes	No
Drive Motor	Honda Petrol GX 160 - 1 cyl	Honda Petrol GX 160 - 1 cyl	Diesel Lombardini	Diesel Lombardini
Output Power	3.6kW, 4.8hp	3.6kW, 4.8hp	3.3kW, 4.5hp	3.3kW, 4.5hp
Dimensions (LxWxH) (mm)	760x450x1035	760x450x1035	760x450x1035	760x450x1035
Operating Weight (kg)	115	115	115	115

BPFS 800 P / BPFS 800 D

BPFS 1000 D

BPFS 450 P / D

- Floor saw in robust and compact construction
- Closed and solid frame
- The smooth raising and lowering of the saw blade with a closed threaded spindle prevents damaging of the saw blade
- Adjustable cutting depth indicator for all saw blade diameters
- A large 33l capacity water tank reduces work interruptions
- The water cooling system provides an optimum saw blade cooling, this guarantees a longer saw blade life
- Easy detachable saw blade cover
- Simple service operations - good access to engine and cutting shaft
- With a parking brake



BPFS 800 P

- Compact floor saw with scissor technology
- Saw blade drive can be switched off mechanically – safe moving and set up of the machine
- Drive via hydrostat guarantees smooth and controlled operation of the machine
- Optimum power transfer with high performance V-belts
- Warp-resistant sheet frame construction
- The compact design and balanced chassis permit easy manoeuvring around the construction site
- The low centre of gravity ensures a precise saw cut
- Very good straight cut thanks to the adjustable rear axle
- Electro- hydraulic lowering and raising of the saw blade with a threaded spindle with cutting depth indicator prevents damage to the saw blade
- Height adjustable handles allow for ergonomic operation
- Saw hood front can be raised for intersections
- Rapid changeover from left to right-hand cutting
- Easy access for prevalent maintenances (air filter, battery, oil filter, fuel filter) due to the perfect drive unit position
- Parking brake and neutral (free-wheeling) comes as a standard feature



BPFS 1000 D

- Optimum power transfer with 10 high performance V-belts
- Warp-resistant sheet frame construction
- The compact design and balanced chassis permit easy manoeuvring around the construction site
- The extremely low centre of gravity ensures a precise saw cut
- Very good straight cut thanks to the adjustable rear axle
- Lifting and lowering of the saw blade is controlled electro-hydraulically
- Handles are height adjustable
- Saw hood front can be raised for intersections
- Rapid changeover from left to right-hand cutting
- Easy access for the usual service and maintenance tasks (air filter, battery, oil and fuel filter)
- Parking brake, operating hours counter and neutral (free-wheeling) mode are standard



TECHNICAL DATA	BPFS 450 P	BPFS 450 D
cutting depth max.	180 mm	180 mm
cutting depth setting	stepless threaded spindle with depth gauge	
saw blade Ø max.	500 mm	500 mm
saw blade holder	25.4 mm	25.4 mm
drive motor	Honda petrol 1-cylinder	HATZ diesel 1-cylinder
output power max.	8.7 kW, 11.8 hp	4.6 kW, 6.3 hp
emission level	-	EPA Tier IV Final
saw blade speed	2500 1/min.	2500 1/min.
dimensions (L/W/H)	1120/550/1060 mm	1120/550/1060 mm
weight	116 kg	126 kg

TECHNICAL DATA	BPFS 800 P	BPFS 1000 D
cutting depth max.	320 mm	400 mm
cutting depth setting	electrohydr. with depth gauge	electro hydraulic/smoothly adjustable
saw blade Ø max.	800 mm	1000 mm
saw blade holder	25.4 mm	25.4 mm
drive motor	Briggs+Stratton petrol 2 cyl.	DEUTZ Diesel 3-cyl.
output power max.	26.1 kW, 35 hp	34.5 kW/ 47 hp
emission level	-	EU IIIA / US T3
cutting gear forwards	-	hydrostatic stepless 0-50 m/min
cutting gear reverse	-	hydrostatic stepless 0-35 m/min
saw blade speed	1750 1/min.	1500 1/min.
left and right cut	yes	yes
dimensions (L/W/H)	1370/820/1120 mm	1250/960/1210 mm
weight	539 kg	768 kg

FLOOR SAWS	NR.
BPFS 450 P without diamond blade, incl. blade guard 500 mm	1001017015
BPFS 450 D without diamond blade, incl. blade guard 500 mm	1001017016
BPFS 800 P without diamond blade, incl. blade guard 800 mm	1001017763
BPFS 1000 D without diamond blade, without blade guard	1001017762
	100816039
ACCESSORIES	
BPFS 800 - blade guard 500 mm	100816125
BPFS 800 - blade guard 800 mm	100816051
BPFS 800 - spot-light LED 12 V	1001040256
BPFS 800 - warning flasher	100816002
BPFS 800 - water pump set	100813046
BPFS 1000 - blade guard 500 mm	100816125
BPFS 1000 - blade guard 800 mm	100816051
BPFS 1000 - blade guard 1000 mm	100816052
BPFS 1000 - spot-light LED 12 V	1001040256
BPFS 1000 - warning flasher	100816002
BPFS 1000 - water pump set	100813046
BPFS 1000 - diesel particulate filter incl. mounting	1001018454

BPFS 500 E

BPFS 800 E

BPFS 500 E

- Lowering and raising the saw blade is done smoothly by means of an enclosed threaded spindle with cutting depth display, thereby preventing damage to the saw blade
- Spindle outside of the dirt area and protected by a galvanised steel tube
- Saw hood front can be raised for intersections
- Easily removable saw blade guard
- Standard with saw blade flange for multiple blade holder up to 15 mm
- A large 30 litre capacity water tank with a big filler nozzle and carrying handles makes refilling easier and reduces work interruptions
- Connection for external water supply with separately adjustable water tap
- Standard flange spraying saves water and provides optimum saw blade cooling. This guarantees a longer saw blade life
- Water tank can be tipped forward – easy to refill, water tank can be completely emptied
- During cutting, more weight can be placed on the saw blade due to the tiltable tank
- Vibration-damping handle reduces the vibrations which can affect the user and improves the working conditions
- Handle is continuously adjustable and can be rotated 180° for an optimal straight cut
- Best transport option using crane lifting hook and handle
- Standard with fixing brake



BPFS 800 E

- Operation even in the tightest of construction sites possible, thanks to the compact, easy to handle design
- The electric floor saws are quiet, so they are especially suitable for cutting work near or inside of buildings (low noise level)
- The BPFS 800 is quickly and easily dismantled into three parts, allowing for ease of transportation within buildings
- Smooth raising and lowering of the saw blade with a threaded spindle and cutting depth indicator, prevents damage to the saw blade
- Optimal rotational speed of the saw blade shaft
- Saw hood front can be raised for cutting all the way to wall or other obstacle
- Patented flush-fitting system for cutting along walls, with 800 mm wall-gliding-saw hood (optional) and flush-fitting mounting of saw blade.
- Flush-fitting cutting along walls in accordance with all current machine operating and C-norm guidelines
- Excellent directional stability due to central position of sawing arm
- The horizontally positioned saw hood offers superior protection against injury and spray from the cooling system
- Height adjustable handles
- Quick changeover from left to right-hand cutting, with minimal handling
- Rear wheel is located outside the saw path, to facilitate recutting of joints when necessary
- Flange spraying system comes as standard feature, helps to preserve water consumption, and provides optimal cooling for extended life span of the blade
- Optimal weight distribution between the front wheels ensures precise tracking and superior cutting accuracy



TECHNICAL DATA	BPFS 500 E	BPFS 800 E
cutting depth max.	180 mm	320 mm
cutting depth setting	stepless threaded spindle with depth gauge	threaded spindle with depth gauge
saw blade Ø max.	500 mm	800 mm
saw blade holder	25,4 mm	25.4 mm
saw blade fixing (flush cuts)		6 x M8 -TK125
drive motor	electric	electric
output power max.	7.5 kW	7.5 kW
voltage	400 V / 50 Hz/60 Hz	400 V / 50 Hz/60 Hz
saw blade speed	1900 '/min.	1250 '/min.
left and right cut		yes
dimensions (L/W/H)	1100/ 530/ 900 mm	1200 / 650 /1090 mm
weight	128 kg	156 kg

FLOOR SAWS	NR.
BPFS 500 E without diamond blade, incl. blade guard 500 mm	1001015072
BPFS 800 E without diamond blade, incl. blade guard 800 mm	100815043
ACCESSORIES	
BPFS 500 E - blade guard 350 mm for dry cutting	1001018632
BPFS 800 - flush cutting blade guard 800 mm	100815109
BPFS 800 - blade guard bar for flush cutting blade guard	100815110
BPFS 800 - flush cutting shaft	100815100

BPMS 400

BPMS 600

BPMS 400

- The water spray system ensures optimum saw blade cooling and the immediate removal of the sawing debris with the lowest water consumption and also complies with the current safety standard
- Table saw with swivelling cutting head
- High-quality, low-maintenance construction
- Welded steel construction and plastic water basin with exact table support for accurate cuts
- The adjustable saw head also allows chop cuts
- Foldable table legs for fast and compact transport
- Standard wheelset makes it easier to move on site and to load in a vehicle
- Rolling table equipped with safety gear and lock
- Integrated water pumps - transport lock
- Removable spray protection
- Rear sloping and removable water pan
- Rubberised saw table for non-slip cuts
- Best transport facility by rear and front welded handle
- Exact, smooth cutting table with adjustable angle stop
- Easy saw blade change through the hinged saw hood cover
- ON / OFF switch with EMERGENCY STOP user-friendly in a protected position



BPMS 600

- The water spraying system guarantees optimum saw blade cooling and immediate removal of debris with very low water consumption and follows to the current safety regulation
- Table saw with stationary cutting head
- High quality maintenance-free design
- Welded steel construction and powder-coated water tank with exact table support for precise stone cuts
- Galvanised, foldable table legs for quick and compact transport
- Standard wheel set simplifies moving on the building site and loading in a vehicle
- With roller table equipped with safety catch and locking mechanism
- Integrated water pump transport lock
- Best transport option by using flexible (back/front) rubber handles
- Exact, smooth running cutting table with adjustable rip guide
- Simple saw blade change via removable saw hood cover



TECHNICAL DATA	BPMS 400	BPMS 600
cut depth min./max.	110 mm / 135 mm	150 / 220 mm
cut depth min./max. 45°	80 mm / 105 mm	-
saw blade Ø min./max.	350 mm / 400 mm	450 / 600 mm
cut length max.	800 mm	800 mm
saw blade holder	25,4 mm	25.4 mm
motor output	2.2 kW/ 230 V / 50 Hz	3.6 kW/400 V
saw blade speed	2800 1/min.	1400 1/min.
dimensions (L/W/H)	1200/800/1290 mm	1600/800/1600 mm
weight	84 kg	94,6 kg
mitre cuts	45°	-

MASONRY SAWS	NR.
BPMS 400 without diamond blade	2001031346
BPMS 600 incl. diamond blade Ø 600 mm for concrete, natural stone	200700502
ACCESSORIES	NR.
BPMS 400 / 600 - adapter cable 2m plug Schuko l coupl. CEE 3-pin 16 A	200822312
BPMS 400 / 600 - adapter cable 2m plug CH Typ12 l coupl. Schuko	200822311
BPMS 400 / 600 - adapter cable 2m plug CEE 3-pin 16 A l coupl. Schuko	200822310

BPMS 700

BPMS 1000

- Low-maintenance construction fit for the building site
- Excellent stable value and operational reliability
- Exacting table layout for precision stone cutting
- Fixed, distortion-free three point stability
- Stable and resilient frame
- Galvanised sawing table with imprinted scale
- Table guidance profile and rollers made of durable, high-strength steel
- Low equipment costs due to precise table guidance
- Perfect saw blade cooling and immediate removal of sawing debris with the optimum water feed system
- Easy to use and operate due to flexible loading and control elements in front
- Easy removal of the water pump (e.g. for cleaning or to avoid freezing)
- Water bath removable from the rear
- Saw head is easily positioned for safe transport
- Ease of manhandling with the front swivel roller, forklift pick-up points and lifting eyes.



TECHNICAL DATA	BPMS 700	BPMS 1000	DTS 1000 V
cutting depth max.	270 mm	370 mm / 420 mm	370 mm / 420 mm
cutting length	520 mm	660 mm	660 mm
saw blade Ø max.	700 mm	900 mm / 1000 mm	900 mm / 1000 mm
saw blade holder	60 mm	60 mm	60 mm
output power max.	5.5 kW	7,5 kW	7,5 kW
voltage	400 V	400 V	400 V
saw blade speed	1400 1/min.	910 1/min.	910 1/min.
protection class	IP 55	IP 54	IP 54
feed and drive unit	manual	manual	hand crank
saw table width	630 mm	745 mm	745 mm
dimensions (L/W/H)	1520/940/1430 mm	1800 / 1050 / 1500 mm	2000 / 1050 / 1500 mm
weight	230 kg	352 kg	375 kg

MASONRY SAWS	NR.
BPMS 700 incl. diamond blade Ø 700 mm for poroton, sand-lime stone	200810164
BPMS 1000 H incl. diamond blade Ø 900 mm for poroton, sand-lime stone	2001041424
BPMS 1000 V incl. diamond blade Ø 900 mm for poroton, sand-lime stone	2001041425
ACCESSORIES	NR.
BPMS 700 / 1000 - rod heater	200780001
BPMS 700 / 1000 - side stop with graduation	200681141

CORING MACHINES

THE COMPACT DIAMOND CORE DRILLING MACHINES FOR WET AND DRY DRILLING

CDM 20 P / S

- Compact, lightweight and ergonomic design
- Three gear levels permit optimum speed selection adapted to the specific core drill diameter
- Simple, controlled operation during hand-guided core drilling using variable mountable clamping handle
- Simple, controlled operation during hand-guided core drilling using variable mountable clamping handle

MULTI-TRONIC

- Overload protection for the highest possible operating comfort and long service life
- Maximum safety due to electronic and mechanical overload coupling as well as additional thermal overload protection



CDM 33 W

- User-friendly – three gear levels permit optimum speed selection adapted to the specific core drill diameter
- Drill bit mounting with integrated spindle guard
- Electromechanical on/off switch on the control box is quick and easy to operate even in difficult situations
- The careful design of the safety clip secures the core drill in the harsh construction site environment as well as acting as a functional handle for daily transport and simple mounting on drilling stands.

MULTI-TRONIC

- Overload protection for the highest possible operating comfort and long service life
- Integrated smooth start makes operation easier when starting the drilling process
- Maximum safety due to electronic and mechanical overload coupling as well as additional thermal overload protection



TECHNISCHE DATEN	CDM 20 P	CDM 20 S
rated power	2000 W	2000 W
output power	1375 W	1375 W
voltage	230 V/50-60 Hz	230 V/50-60 Hz
rated current	9.5 A	9.5 A
speed without load	670/1450/2770 1/min.	670/1450/2770 1/min.
speed fully load	450/1050/2000 1/min.	450/1050/2000 1/min.
core drill Ø masonry max.	200 mm	200 mm
core drill Ø concrete max.	150 mm	150 mm
core bit connection	1 1/4" UNC	1 1/4" UNC
clamping collar Ø	60 mm	60 mm
dimensions (L/W/H)	468/106/297 mm	564/106/164 mm
weight	7.5 kg	7.5 kg

TECHNICAL DATA	CDM 33 W
rated power	3300 W
output power	2550 W
voltage	230 V/50-60 Hz
rated current	16 A
speed without load	360/680/1050 1/min.
speed fully load	220/420/650 1/min.
core drill Ø stationary	350/160/100 mm
core bit connection	1 1/4" UNC
drill motor holder	UNIVERSAL mounting plate
dimensions with clip (L/W/H)	541/181/194 mm
weight	13.3 kg

CORING MACHINES	NR.
CDM 20 P wet/dry, incl. carry case	3001004139
CDM 20 S wet/dry, incl. carry case	3001004304
CDM 33 W stationary with MULTI-TRONIC, wet, incl. anti-friction ring	300700303

ACCESSORIES	NR.
CDM 20 - antifriction washer (brass)	300823520
CDM 20 - centre spike 190 - 250mm	300700353
CDM 20 - centre spike 230 - 350 mm	300700354
CDM 20 - centre spike 360 - 480 mm	300700355
CDM 33 - antifriction ring	300700400
CDM 33 - water flow indicator	300700410

DRILL STANDS

COMPACT, FUNCTIONAL AND ROBUST DIAMOND CORE DRILLING STANDS
FOR RELIABLE PROFESSIONAL USE

- Simple assembly and efficient exchange of the core drill motors via the UNIVERSAL quick clamping collar system.
- The UNIVERSAL-mounting plate makes it easy to mount any drill motor precisely
- Ergonomic and effortless core drilling by hand crank which can be operated from either side
- The support feed is precisely controllable with 1:1 direct ratio or an additional 1:2 fine control (CDR 402) ratio.
- Precise support guidance using V-sliding blocks and the aluminium profile column
- The bearing guide is precise and sturdy, and can be easily adjusted
- The steel gear rack is safely built into the aluminum column
- For drilling at an angle, the aluminium profile column can be pivoted backwards by up to 45°
- The integrated handle on the aluminium profile column offers multi-purpose handling and drilling stand transport
- Precise alignment of the core drilling stand by four levelling screws as well as a vertical and horizontal water level integrated in the “support”
- The support can be locked in any position with a locking screw, for stepless height adjustment



CDR 342



[1] CDR 160



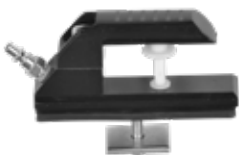
[2] CDR 400



[3] Collar



[4] Quick-clamping spindle M12



[5] Vacuum cover



[6] Vacuum sealing ring



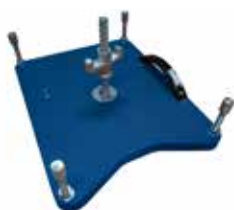
[7] UNIVERSAL spacer plate



[8] Anchoring iron



[9] Vacuum pump



[10] Vacuum plate



[11] Water collecting ring

TECHNICAL DATA	BPDS 160	BPDS 340	BPDS 400
core bits Ø recommended	150 mm	300 mm	350 mm
core bits Ø max.	162 mm	342 mm	402 mm - spacer plate
adjustable useful length	585 mm	620 mm	585 mm
motor mounting using	collar-Ø 60 mm	UNIVERSAL	UNIVERSAL
feed gears operation from either side	1:1	1:1	1:1 and 1:2
feed	hand crank	hand crank	hand crank
angle drilling	90° - 45°	90° - 45°	90° - 45°
dimensions (L/W/H)	450/230/900 mm	470/280/1020 mm	520/390/1035 mm
weight	7.7 kg	10.9 kg	18.9 kg

DRILL STANDS	NR.
[1] BPDS 160 with clamping collar Ø 60 mm quick-clamping system	300700319
BPDS 340 with UNIVERSAL quick-clamping system	300700320
[2] BPDS 400 with UNIVERSAL quick-clamping system	300700321

ACCESSORIES	NR.
[3] BPDS 340 - collar Ø 60 mm	300700322
[4] BPDS 160 / 340 / 400 - quick-clamping spindle M12	300700323
[5] BPDS 160 / 340 - vacuum cover	300700324
[6] BPDS 160 - vacuum sealing ring	300700325
[6] BPDS 340 - vacuum sealing ring	300700326
[7] BPDS 340 / 400 - UNIVERSAL spacer plate 30 mm	300700327
[7] BPDS 340 / 400 - UNIVERSAL spacer plate 60 mm	300700328
[7] BPDS 340 / 400 - UNIVERSAL spacer plate 90 mm	300700329
BPDS 340 - quick-clamping mounting plate	300700330
BPDS 400 - quick-clamping mounting plate	300700331
BPDS - anchoring dowels Ø 16mm / M12 (50 pcs.)	300700401
[8] BPDS - anchoring iron incl. grip	300700402
[9] BPDS - vacuum pump incl. 2 m hose and pneumatic quick coupling	300700350
[10] BPDS - vacuum plate	300700360
[11] BPDS - water collecting ring LWR 100	3001018354
[11] BPDS - water collecting ring LWR 150	3001018355
[11] BPDS - water collecting ring LWR 200	3001018356
[11] BPDS - water collecting ring LWR 250	3001018357
[11] BPDS - water collecting ring LWR 350	3001018358
BPDS - rubber seal set LWR 100	3001021053
BPDS - rubber seal set LWR 150	3001021054
BPDS - rubber seal set LWR 200	3001021055
BPDS - rubber seal set LWR 250	3001021056
BPDS - rubber seal set LWR 350	3001021057
BPDS - sealing disc with scale LWR 100	3001021059
BPDS - sealing disc with scale LWR 150	3001021060
BPDS - sealing disc with scale LWR 200	3001021061
BPDS - sealing disc with scale LWR 250	3001021062
BPDS - sealing disc with scale LWR 350	3001021063

CONCRETE SCARIFIERS

Light and handy scarifier: Environmentally-friendly and in accordance with the required profile. Continuous depth settings from fine to coarse. Wide range of tools for every purpose.

- Strong, solid welded steel construction designed for robust use
- With connection for industrial vacuum
- EMERGENCY-OFF safety switch
- Depth achievement and contact pressure of the rasping and milling wheels can be precisely adjusted with the rotary disk
- Adjustable guiding grip allows work very close to the wall
- Sturdily dimensioned rubber wheels provide a high degree of operating convenience



The fast and strong Scarifier: Environmentally-friendly and in accordance with the required profile

- Depth achieved and contact pressure of the rasping wheels and milling wheels can be precisely set with the rotary disk
- Strong, solid welded steel construction designed for robust use
- Adjustable guiding grip allows work very close to the wall. Robustly designed rubber wheels, high degree of operating comfort
- Extremely wear resistant. For roughening, abrading, leveling as well as grooving of concrete, stone and asphalt surfaces



Powerful, efficient roughening and cleaning machine for large-area tasks. Wide range of tools for versatile use. For hourly rates of up to 120m², depending on the nature of the surface.

- Strong, solid welded steel construction designed for robust use
- Adjustable guiding grip allows work very close to the wall
- Power transfer with toothed belts
- Direction of rotation and polarity reversing switch
- The division of the milling wheels (close or wide) influences the profile of the surface
- Highly wear resistant For roughening, abrading, leveling as well as grooving of concrete surfaces



TECHNICAL DATA	BPS200 (Electric)	BPS250 (Electric)
Motor	1.8 kW, 2.2 kW	4 kW
Working Width	200 mm	250 mm
Dimensions	36m x 90m x 100m mm	48 x 113 x 118 cm
Weight	53 kg	129 kg

TECHNICAL DATA	BPS320 (Electric)
Motor	11 kW, 12.6 kW, 15 kW
Working Width	320 mm
Drive	hydrostatic, self-propelled
Weight	330 kg

FLOOR GRINDERS

The ABPG 270 is an excellent light-weight Machine for concrete cleaning and grinding, quick and easy removal of coatings and adhesives. The ideal equipment to deliver the best possible Surface Preparation before the application of a new coating. The Machine is designed for contractors who need a light-weight machine for small and medium sized jobs.

- Working width 270 mm with 4 diamond tools
- For instant change of diamond tools on job site: "Easy-Click"
- The Tool Holder is designed to fit with magnetic adapters 4 diamond tools
- Removable side plate for edge cleaning work
- The Axel height is easily adjusted for the operators ease of use
- Steel body construction
- Excellent dust control with the effective shroud with vacuum port will keep the working environment clean and away from abrasive dust particles



BPG 450 „TRIO-TEC“ Floor Grinder-Polisher with 3 Counter Rotating Tool Heads. Compact robust steel design. Ideally suited to prepare and polish surfaces.

- The 3-Counter-Rotating heads add stability and produce a superior finish.
- Easy coupling to industrial Dust Collection System
- Dust Control Protects against silica and other dusts
- The handle can be adjusted to a height that suits the operator
- Removable side plate to work up to the edge of the wall
- For dry and wet applications
- "Easy Click" quick Tool Change System
- Soft on Floors tough on coatings
- Steel Body construction



The BPG 520 is extremely aggressive, but floor friendly in removal of all types of thick coatings, underlayments and high spots in floors.

- Clamping lever
- Dust shroud with rubber seal
- Rubber wheels 50 x 160 mm
- Connection for Industrial extractor
- Emergency stop switch
- Special screw for transport
- Security switch



TECHNICAL DATA	BPG270
Motor	2.2 kW (Electric)
Weight	57 kg
Tool Plate Rotation	1500 rpm (constant Rotation) 300 – 2000 rpm (Model SPC)
Working Width	270 mm

TECHNICAL DATA	BPG450
Motor	2.2 kW (Electric)
Voltage	230 V and 400 V
Motor speed	1460 rpm (constant Rotation)
Working Width	450 mm

TECHNICAL DATA	BPG520
Motor	3 kW (Electric)
Voltage	400 V / 50/60 Hz, 6.4 A
Motor speed	1450 rpm
Working Width	520 mm

FLOOR GRINDERS PRO

Floor Grinding and Polishing machine with 3 counter rotating High-Precision Planetary Heads. Compact robust steel design. Ideal for medium to large Surfaces. The 8-cornered Octavia-Form Dust Hood with side Opening for Edge Grinding along vertical surfaces and walls. Easy stand-up work avoids Backache.

- Speed Regulation for grinding and polishing
- Easy adjustment of grinding pressure with shifting of weight
- Emergency Switch-Off
- Flexible tool plate Holder
- Height adjustable handle
- Integrated water tank with control lever for wet and dry applications
- Vibrations reducing solid rubber Wheels
- Compact and robust steel Body design
- 3 tool plates with a total of 9 segments
- Fast Tool Change on job site with "Easy-Click"



Floor Grinding and Polishing machine with 3 counter rotating High-Precision Planetary Heads. Compact robust steel design. Ideal for medium to large Surfaces. With the 8-cornered Octavia-Form Dust Hood with side Opening for Edge Grinding along vertical surfaces and walls. Easy stand-up work avoids Backache.

- Rotation Regulation for grinding and polishing
- Easy adjustment of grinding pressure with shifting of weight plates
- Flexible tool plate Holder
- Height adjustable handle
- Integrated water tank with control lever for wet and dry applications
- Compact and robust steel Body design
- Fast Tool Change on job site with "Easy-Click"



Floor Grinding and Polishing machine BPG 825-PRO with High Precision Planetary Gear and Powerful Drive. Ideal for large Surfaces..

- Important: Gear unit hermetically sealed and dustproof
- High and ergonomic Comfort
- Rotation Regulation for grinding and polishing
- Flexible tool plate Holder
- Integrated water tank with control lever for wet and dry applications
- Vibrations reducing solid rubber Wheels
- Compact and robust steel Body design
- Fast Tool Change on job site with "Easy-Click"



TECHNICAL DATA	BPG 525 PRO	BPG650	BPG825
Motor	7.5 kW (Electric)	11 kW (Electric)	15 kW (Electric)
Voltage	3x400 V / 50 Hz, 16 A	400 V / 50 Hz, 32 A	3x400 V / 50 Hz, 32 A
Tool Plate Rotation	100-700 rpm	100-700 rpm	120-840 rpm
Working Width	525 mm	650 mm	825 mm

BPDA 100



ASPHALT

Diamond blades for asphalt, with inclined protection segments



Ø in mm	Segments (L x W x H)	No.	Bore hole	Article No.
300	40 x 3,2 x 10	18	20,0 mm	1000791140
300	40 x 3,2 x 10	18	25,4 mm	1000791118
350	40 x 3,2 x 10	21	20,0 mm	1000791141
350	40 x 3,2 x 10	21	25,4 mm	1000791119
400	40 x 3,6 x 10	24	25,4 mm	1000791120
450	40 x 3,6 x 10	28	25,4 mm	1000791121
500	40 x 3,6 x 10	30	25,4 mm	1000791122
600	40 x 4,0 x 10	36	25,4 mm	1000791123



BPDC 100



CONCRETE

Diamond blades for asphalt, with inclined protection segments



Ø in mm	Segments (L x W x H)	Bore hole	Article No.
115	35,0 x 2,6 x 10,0	22,2 mm	10001037637
230	33,7 x 3,1 x 10,0	22,2 mm	10001037638

BPDC 200



CONCRETE

Diamond blades for concrete and construction materials



Ø in mm	Segments (L x W x H)	No.	Bore hole	Article No.
115	31,5 x 2,4 x 10	9	22,2 mm	1000791100
125	31,5 x 2,4 x 10	10	22,2 mm	1000791101
230	31,5 x 2,6 x 10	16	22,2 mm	1000791102
300	40 x 3,2 x 10	21	20,0 mm	1000791136
300	40 x 3,2 x 10	21	25,4 mm	1000791103
350	40 x 3,2 x 10	24	20,0 mm	1000791137
350	40 x 3,2 x 10	24	25,4 mm	1000791104
400	40 x 3,4 x 10	28	20,0 mm	1000791142
400	40 x 3,4 x 10	28	25,4 mm	1000791105
450	40 x 3,4 x 10	32	25,4 mm	1000791106

BPDC 300



CONCRETE

Diamond blades for concrete, reinforced concrete and construction materials



Ø in mm	Segments (L x W x H)	No.	Bore hole	Article No.
300	40 x 2,8 x 10	21	20,0 mm	1000791200
300	40 x 2,8 x 10	21	30,0 mm	1000791146
350	40 x 3,2 x 10	24	20,0 mm	1000791201
350	40 x 3,2 x 10	24	25,4 mm	1000791147
400	40 x 3,5 x 10	28	20,0 mm	1000791202
400	40 x 3,5 x 10	28	25,4 mm	1000791148
450	40 x 3,6 x 10	32	25,4 mm	1000791149
500	40 x 4,0 x 10	36	25,4 mm	1000791150
600	40 x 4,6 x 10	42	30,0 mm	1000791151

BPDG 100



GRANITE

Diamond blades for granite,
natural and artificial stones



Ø in mm	Segments (LxWxH)	No.	Bore hole	Article No.
230	42 x 2,6 x 10	16	22,2 mm	1000791109
300	38 x 3,0 x 10	21	20,0 mm	1000791138
300	38 x 3,0 x 10	21	30-25,4 mm	1000791110
350	40 x 3,2 x 10	24	20,0 mm	1000791139
350	40 x 3,2 x 10	24	30-25,4 mm	1000791111
400	38 x 3,5 x 10	28	30-25,4 mm	1000791112
450	38 x 4,0 x 10	32	30-25,4 mm	1000791113



BPCB 100



CONCRETE

Diamond core bits
for concrete



Ø in mm	Segments (LxWxH)	No.	Connection	Working length	Article No.
42	24 x 3,5 x 10	4	1 1/4"	400 mm	1100790717
52	24 x 3,5 x 10	5	1 1/4"	400 mm	1100790977
56	24 x 3,5 x 10	5	1 1/4"	400 mm	1100790718
62	24 x 3,5 x 10	6	1 1/4"	400 mm	1100790978
72	24 x 3,5 x 10	6	1 1/4"	400 mm	1100790980
82	24 x 3,5 x 10	7	1 1/4"	400 mm	1100790981
92	24 x 3,5 x 10	8	1 1/4"	400 mm	1100790982
102	24 x 4,0 x 10	9	1 1/4"	400 mm	1100790983
112	24 x 4,0 x 10	10	1 1/4"	400 mm	1100790984
122	24 x 4,0 x 10	10	1 1/4"	400 mm	1100790985
127	24 x 4,0 x 10	10	1 1/4"	400 mm	1100790986
132	24 x 4,0 x 10	11	1 1/4"	400 mm	1100790987
142	24 x 4,0 x 10	11	1 1/4"	400 mm	1100790988
152	24 x 4,0 x 10	12	1 1/4"	400 mm	1100790989
162	24 x 4,0 x 10	13	1 1/4"	400 mm	1100790990
172	24 x 4,0 x 10	13	1 1/4"	400 mm	1100790720
182	24 x 4,0 x 10	15	1 1/4"	400 mm	1100790991
200	24 x 4,8 x 10	16	1 1/4"	400 mm	1100790992
225	24 x 4,8 x 10	17	1 1/4"	400 mm	1100790721
227	24 x 4,8 x 10	17	1 1/4"	400 mm	1100790993



Further diameters on demand

BPGC 100



CONCRETE

Diamond grinding discs
for concrete



Ø in mm	Type	Bore hole	Article No.
100	double row	22,2 mm	12001041845
125	double row	22,2 mm	12001041846
150	double row	22,2 mm	12001041847
180	double row	22,2 mm	12001041848

BPGC 250



CONCRETE

Diamond grinding discs for
concrete and floor pavement



Ø in mm	Segments (L x W x H)	No.	Bore hole	Article No.
250	40 x 10 x 10	20	19 mm	1041844

OVERVIEW

REMOVAL TOOLS

Efficient diamond tools to remove epoxy and PU coatings, residual adhesives or to grind thick layers of soft material such as asphalt or rain damaged concrete.



P-1xH



P-2xH



P-2xQ



H-PCD

FLOOR PREPARATION TOOLS



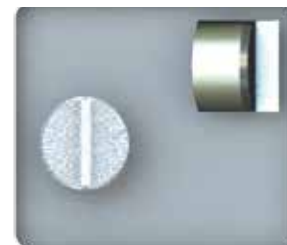
	Soft concrete	Soft concrete	Medium concrete	Hard concrete
Grit 16		H-16	M-016	S-016
Aggressive grinding				
Grit 30		H-030	M-030	S-030
Rough grinding				
Grit 60		-	M-060	S-060
Fine grinding				
Grit 120		-	M-120	S-120
Polishing				

POLISHING TOOLS AND FLUIDS

Hardening	FDENS: Densifier to harden floors and to prepare them for polishing.
Transition	FHYBR: Hybrid polishing tool.
Polishing	Selection of finishing: FRESN 200: Light honed finish FRESN 400: Matte finish FRESN 800: Low sheen FRESN 1500: High-sheen finish FRESN 3000: High-gloss finish
Protecting	FGUARD: Guard to protect floors against stains and enhance colour and gloss.
Make it shine	FPAD: Use diamond impregnated pads on a burnisher or grinder to reach a perfect finish.

1XHL 1XHR

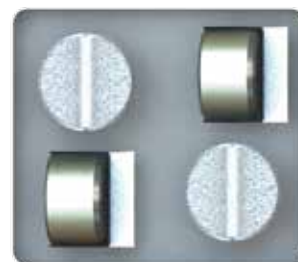
Aggressive removal up to 6 mm coating residues (adhesives, epoxy, PU) with high power machine



Pieces	Type	Article No.
6	Counter-clockwise	
9	Counter-clockwise	
6	Clockwise	
9	Clockwise	

2XHL 2XHR

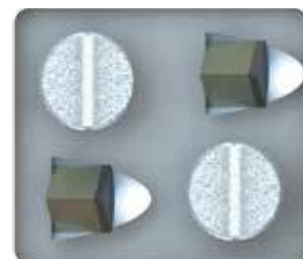
Aggressive removal up to 6 mm coating residues (adhesives, epoxy, PU) with high to medium power machine.



Pieces	Type	Article No.
6	Counter-clockwise	
9	Counter-clockwise	
6	Clockwise	
9	Clockwise	

2XQL 2XQR

Removal up to 3 mm coating residues (adhesives, epoxy, PU, asbestos, paint) with medium to low power machine.



Pieces	Type	Article No.
6	Counter-clockwise	
9	Counter-clockwise	
6	Clockwise	
9	Clockwise	

PCD

Residual coating removal, rain damaged concrete, paint, asphalt grinding.



Pieces	Article No.
9	
12	

*Direction of rotation is determined by the operator's point-of-view standing behind the grinder.

S-016

Very hard to hard concrete.
Grit 16 for aggressive grinding.



Pieces	Article No.
9	
12	

M-016

Hard to medium concrete.
Grit 16 for aggressive grinding.



Pieces	Article No.
9	
12	

H-016

Medium to soft concrete.
Long lasting.
Grit 16 for aggressive grinding.



Pieces	Article No.
9	
12	

S-030

Very hard to hard concrete.
Grit 16 for aggressive grinding.



Pieces

Article No.

9

12

M-030

Hard to medium concrete.
Grit 16 for aggressive grinding.



Pieces

Article No.

9

12

H-030

Medium to soft concrete.
Long lasting.
Grit 16 for aggressive grinding.



Pieces

Article No.

9

12

S-060

Very hard to hard concrete.
Grit 60 for fine grinding.



Pieces	Article No.
9	
12	

M-060

Hard to medium concrete.
Grit 60 for fine grinding.



Pieces	Article No.
9	
12	

S-120

Very hard to hard concrete.
Grit 120 to prepare before
polishing.



		Pieces	Article No.
		9	
		12	

M-120

Hard to medium concrete.
Grit 120 to prepare before
polishing.



		Pieces	Article No.
		9	
		12	

FDENS

Lithium based densifier.
Increase substrate hardness
before polishing.



Quantity	Article No.
20 l	

FHYBR

Transition tool to switch from
metal bond to resin bond
polishing tools. Velcro connection. Dry use.
Grit 100.



Pieces	Article No.
3	
9	

FRESN

Resin bond polishing tool.
Velcro connection. Dry use.



Type	Pieces	Article No.
FRESN 200 - Light honed finish	3	
	9	
FRESN 400 - Matte finish	3	
	9	
FRESN 800 - Low sheen	3	
	9	
FRESN 1500 - High-sheen finish	3	
	9	
FRESN 3000 - High-gloss finish	3	
	9	

FSPAC

Flexible spacer to absorb small floor's irregularities. Velcro connection.



Ø in mm	Article No.
230	
280	

FGUAR

Protects the floor against stains and enhance floor colours and shine.



Quantity	Article No.
20 l	

FPAD

Grit 1500:
Diamond impregnated pad for maximum shine

Grit 3000:
Diamond impregnated pad for high gloss aesthetic.



Grit	Ø in mm	Pieces	Article No.
1500	229 mm	12	
1500	280 mm	12	
1500	432 mm	12	
1500	533 mm	5	
1500	686 mm	5	
3000	229 mm	12	
3000	280 mm	12	
3000	432 mm	12	
3000	533 mm	5	
3000	686 mm	5	

ACCESSORIES FOR SCARIFIERS

HMT CUTTER



Tungsten Points	Outer Ø	Inner Ø	Thickness
5	40 mm	16 mm	6 mm
8	55 mm	15 mm	6 mm

FLAT STAR CUTTER



Steel heat treated



Outer Ø	Inner Ø	Thickness
50 mm	15 mm	4 mm

BEAM CUTTER



Tungsten Blades



Outer Ø	Inner Ø	Thickness
40 mm	15 mm	22 mm

STAR
CUTTER



Full tungsten



Outer Ø	Inner Ø	Thickness
30 mm	11.5 mm	7.5 mm

ITAL TOWER

ITAL TOWER FENIX

- Lighting tower with manual lifting system and auto brake winch
- Low noise diesel generator
- Bounded tank capacity 110%
- Site tow-trailer with single axle suspensions
- Lockable doors
- Large doors for maintenance
- Zinc plating and epoxy powder painted structure for outdoor application



TECHNICAL DATA	ITAL TOWER FENIX
Frequency	50 Hz
Speed	3000 rpm
Voltage	230 V
Maximum electrical power	4,2 kW
Maximum Height	7,5 m
Lifting System	manual
Extentions	5
Rotation	355°
Tank	43 l
Floodlights	4 X 300 W LED
Manual Stabilizers	4+1 (Ruota)
Max Runtime with Lights Only	86 hours
Fuel Consumption w/ Lights Only	0,5 l/h
Max Wind Rating	90 km/h
Tyres	155/80R13
Weight	600 kg
Engine	
Model	Model Kohler 15LD350
Fuel	diesel
Cylinders	1
Cooling System	Air
Alternator	
Model	Linz Electric
Type	SP
Electrical Power	4,2 KW
Cos-fi	1

ITAL TOWER

ITAL TOWER ASTRID

- Light coverage: 3300 mq - average 10 lux
- Floodlights: 4x160W MultiLED
- Lumen: 81400
- Mast: Hydraulic



ITAL TOWER OKAPI

- Light coverage: 3300 mq - average 10 lux
- Floodlights: 4x160W MultiLED
- Lumen: 81400
- Mast: Hydraulic



TECHNICAL DATA	ITAL TOWER ASTRID	ITAL TOWER OKAPI
Performance data		
Rated frequency	50 Hz	50 Hz
Rated voltage	230 VAC	230 VAC
Rated Power	3 kW	3 kW
Operating temp	-25/+50 °C	-25/+50 °C
Energy consumption		
Autonomy	60 h + at 30% load	60 h + at 30% load h
Battery Pack	12 AGM - 400 A/h	12 AGM - 400 A/h
Auxiliary power	2 kVA	2 kVA
Battery recharge	12 h	12 h
Galvanized Mast		
Rotation	350°	350°
Max height	8,5 m	8,5 m
Max speed wind	110 km/h	110 km/h
Canopy and trailer		
Trailer	Road-tow trailer	Stationary
Tyres	185/70/R13	-
Basement	Bunded base 120%	Bunded base 120%
Stabilizers	4+1	4
Canopy	Powder coating paint	Powder coating paint
Shipment		
Dimension	2350x1470x2400 mm	1220x1120x2400 mm
Weight	850 kg	850 kg

ITAL TOWER

ITAL TOWER MT

- 4x75w MULTI LED
- Die cast aluminum body
- Highly resistant rated IP67 with a lifetime of 85.000 hours
- Zinc-plating vertical mast
- Mast with manual lifting system
- Option 7 meters height
- 4 adjustable STABILIZERS
- Available with our arion series gen-set



TECHNICAL DATA	ITAL TOWER MT	ITAL TOWER TOWERLOOP
Lighting Area	1200 mq - average 5 lux	2600 mq - average 10 lux
Floodlights	4x75W MultiLED	4x160W MultiLED
Lumen	36900	81400
Mast	Manual	Manual
Rated Frequency	50/60 Hz	50/60 Hz
Rated Voltage	110/230 VAC	110/230 VAC
Rated Power	-	-
Operating temperature	-25/+50 °C	-25/+50 °C
Sound level @7m	0 db	0 db
No Generator	-	-
Energy consumption	0,3 kW (4 lights on)	0,65 kW (4 lights on)
Rotation	0 °	359 °
Max height	5,5 m	7 m
Max speed wind	80 km/h	100 km/h
Trailer	Stationary	and trolley
Stabilizers	4	4
Canopy	Powder coating paint	Powder coating paint
Dimension	1920 x 360 x 640 mm	800 x 940 x 2200 mm
Weight	106 kg	235 kg

BauPower Middle East FZ-LLC
Jafza 1 Building
Jebel Ali Free Zone
United Arab Emirates

Phone +971 52 891 4787
Email office.dubai@baupowergroup.com
www.baupowergroup.ae

BauPower Middle East FZ-LLC
Business Center RAKEZ
Ras Al Khaimah
United Arab Emirates

Bau Power Group AG
Staatsstrasse 199
9463 Oberriet
Switzerland