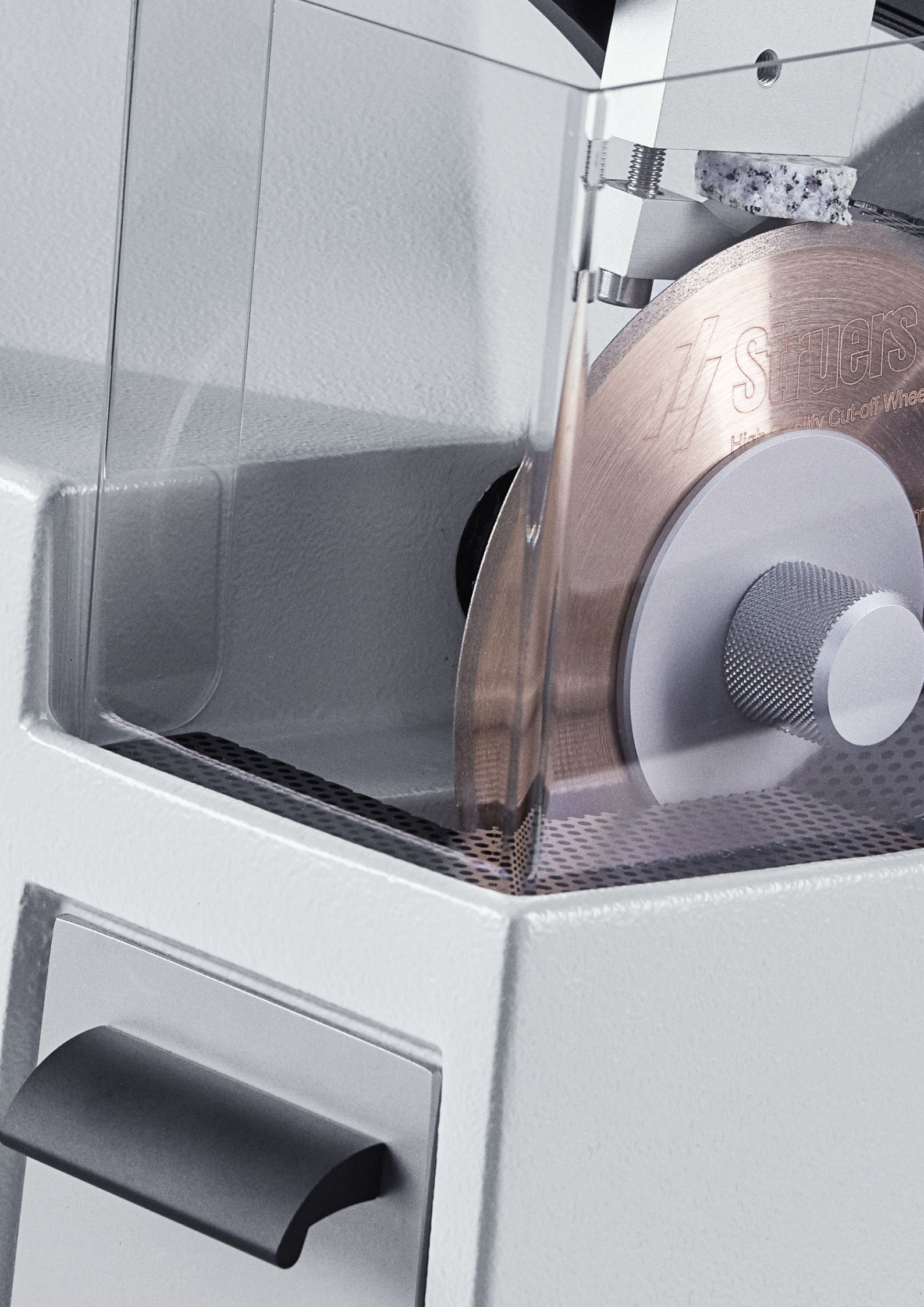




# Low-Speed Precision Cutting Machine for Gentle Sectioning

Workpieces up to 30 x 40 mm | Precision cutting



STUERS  
High Quality Cut-off Wheel



# Small Automatic Precise

Meet the small, low-speed, automatic, precision cutting machine for sectioning materialographic workpieces.

The Minitom precision cutter is for you who section smaller, delicate workpieces that cannot tolerate the heat generated by high-speed sectioning.

A gravity feed design in your Minitom precision cutter allows for sectioning various types of materials with high reproducibility and creating minimal deformation, using only CBN and diamond cut-off wheels.

Welcome to the world of Minitom.

# 5

## Features That Keep You Precise

### **Constant speed, even at high load**

You can vary the cutting speed of Minitom, and the motor is designed to ensure that the speed you select remains constant even at high load.

### **Set specimen size with highest accuracy**

The required specimen width can be set with an accuracy of + 0.01 mm, utilizing a micrometer screw, and the sectioning pressure can be selected independently from the weight of the workpiece.

### **Thermal overload protection**

The motor is equipped with thermal overload protection, although before switching out, an overload indicator provides a visual warning that either the cutting procedure should be stopped, or the sectioning pressure should be reduced.

### **Adjust to stop at any stage**

Minitom can be adjusted to stop sectioning at any stage of the operation, e.g., when the material is cut through. The cutting process is liquid-cooled, with the cooling liquid draining back continuously into the coolant tank.

### **Set to operate in just a few minutes**

Minitom is very easy to operate, with fixation of the workpiece and the setting of stop position, cutting pressure and cut-off wheel rotation speed taking only a few minutes.

Fasten the workpiece in a holder mounted on the movable arm. This arm acts as a steelyard with two weights, one of which balances the holder with the workpiece, the other being used to set the exact cutting pressure. During the cutting operation, the arm is guided down over the cut-off wheel using the pressure from the cutting weight.

The coolant tank is straightforward to remove and makes its cleaning simple. Minitom's practical and attractive design is the product of a very extensive program of design development.



Want to know more? Go to [struers.com/Minitom](https://struers.com/Minitom)

# More Than 140 Years of Fine-Tuned Service

Don't hesitate to use it.



When you choose any equipment from Struers, you also choose some of the top specialists in the world along with a wide range of support at your fingertips. This includes:

- Access to our global support hotline
- Specialist counseling on how to optimize your individual processes
- All critical spare parts available for immediate shipping
- An annual service review
- Online manuals

## Specialist counseling

You can always, and at no expense, contact Struers' experienced application specialists with any questions you might have regarding your Struers equipment, best practice testing, or your specific testing situation. That is a natural part of your Struers equipment purchase. Just go to [struers.com/contact](https://www.struers.com/contact) or contact your local specialist.

# Extra Services



## ServiceGuard

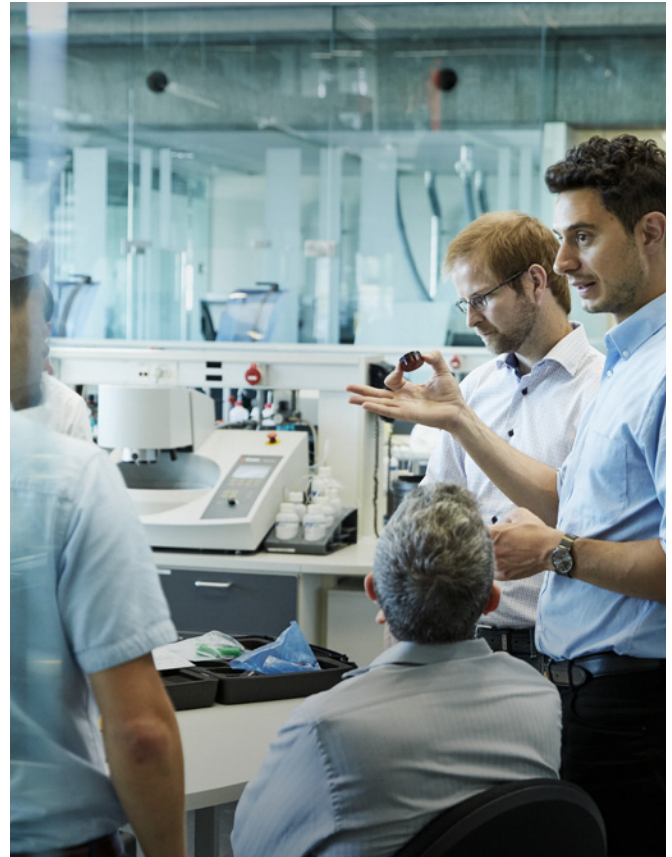
Which service is right for you?

Struers ServiceGuard covers a comprehensive range of technical services and training, including service plans, service packages, single services, and spare parts.

Our global network of technical service engineers will work with you to determine the service level best suited for your requirements.

See more at [struers.com/service](https://struers.com/service)

**Service | Guard** 



## Application assessment

Let's discover your optimization opportunities.

A Struers Application Specialist visits your facility to perform an in-depth assessment of your use of Struers equipment, materialographic processes, and workflows. The specialist identifies quality and optimization opportunities and provides you with practical tips.

Want to know more? Go to [struers.com/Minitom](https://struers.com/Minitom)

# Technical Data

## Model

	<b>Minitom</b>
Specimen holder arm	
Balance weight	200 g / 7 ounces
Cutting weight	350 g / 12 ounces
<b>Cut-off wheel</b>	
Size	75 - 125 mm / 3 - 5"
Arbor size	12.7 mm / 0,5"
Rational speed	100 - 420 rpm
Cutting capacity	30 x 40 mm / 1.2" x 1.6"
Motor power	38 W
Controls	Touchpad and turn knob
Recirculation cooling tank	250 ml / 0.07 gallons
Noise level	L <sub>PA</sub> = 58 dB(A)
Surrounding temperature	5 - 40° C / -13 -131° F
Humidity	< 95 % RH non-condensing
Supply	
Voltage / frequency	100 - 240 V / 50 - 60 Hz
Safety	In compliance with all relevant EU directives
<b>Dimensions and weight</b>	
Width	28 cm / 11"
Depth	40 cm / 15.7"
Height	40 cm / 15.7"
Weight	8 kg / 17.6 lbs.

Struers' equipment is in conformity with the provisions of the applicable International Directives and their appurtenant Standards.  
(Please contact you local supplier for details.)



# Accessories and Cut-Off Wheels

For your customized sectioning solution, please choose from a wide range of accessories and cut-off wheels.

## Cut-off wheels

Struers' cut-off wheels are designed for Struers' cutting machines and cover the full range of materials that are met in materialographic applications.

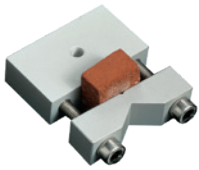
Minitom uses CBN and diamond cut-off wheels with a diameter of 75 mm (3.0") to 127 mm (5.0") and a center hole diameter of 12.7 mm (1/2"). The cut-off wheels are available with different grain sizes and concentrations.

To find the perfect cut-off wheel for your job see the Cut-Off Wheel selection guide in the **Consumables Catalog**.



## Specimen holders

Minitom can be supplied with a variety of specimen holders to suit a wide range of workpiece types. Specimen holder ISONI is delivered along with Minitom.



Cat. no.:  
04436901

**Specimen holder ISONI, for general use**  
Vice type with max. opening 25 mm / 1".



Cat. no.:  
04436902

**Specimen holder ISOLA, for long specimens**  
Double parallel vice with max. opening 25 mm / 1".



Cat. no.:  
04436903

**Specimen holder ISORU, for round specimens**  
Max. opening 30 mm dia.



Cat. no.:  
04436904

**Specimen holder ISOSK, for irregularly shaped specimens**  
With five screws. Max. opening 30 mm.



Cat. no.:  
04436905

**Specimen holder ISOFA, for adhesive mounting of specimens**  
30 x 40 mm.



Cat. no.:  
04436906

**Specimen holder ISOOP, for round specimens**  
Teardrop type with max. opening 20 mm dia.

# 6 Ways to Improve the Speed and Efficiency of Your Cutting

An efficient sample analysis process starts with the cutting. Get your cutting right to improve your sample quality and save time in the next step of the process.


## Learn how to:

- Improve your cutting precision
- Increase your reproducibility
- Step up the speed of your cutting

Read the full article at [struers.com/qualitycutting](https://www.struers.com/qualitycutting)

## Discover the Full Range of Struers Cutting Machines

What size is your workpiece?

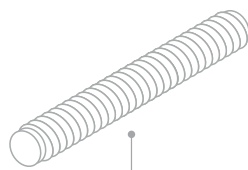
			
Max. 30 x 40 mm	Max. 35 x 80 mm	Max. 50 x 165 mm	non-automatic Max. 42 x 120 mm
			
<b>Minitom</b>	<b>Accutom</b>	<b>Secotom</b>	<b>Labotom</b>



Max. 105 x 102 mm



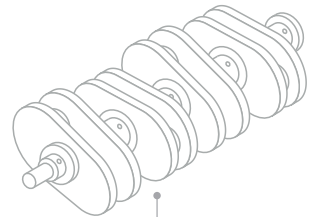
**Discotom**



Max. 125 x 290 mm



**Axitom**



Max. 190 x 254 mm



**Magnutom**

Want to know more? Go to [struers.com/Minitom](https://www.struers.com/Minitom)

**Struers ApS**  
Pederstrupvej 84  
DK-2750 Ballerup, Denmark

Tel.: +45 44 600 800  
Fax: +45 44 600 801  
struers@struers.dk  
www.struers.com

**SINGAPORE**  
**Struers Singapore**  
627A Aljunied Road,  
#07-08 BizTech Centre  
Singapore 389842  
Tel.: +65 6299 2268  
Fax: +65 6299 2661  
struers.sg@struers.dk

**SPAIN**  
**Struers España**  
Camino Cerro de los Gamos 1  
Building 1 - Pozuelo de Alarcón  
CP 28224 Madrid  
Tel.: +34 917 901 204  
Fax: +34 917 901 112  
struers.es@struers.es

**FINLAND**  
**Struers ApS Suomi**  
Sahajankatu 20-22 A6  
00880 Helsinki  
Tel.: +358 (0)207 919 430  
finland@struers.fi

**SWEDEN**  
**Struers Sverige**  
Box 20038  
161 02 Bromma  
Tel.: +46 (0)8 447 53 90  
Fax: +46 (0)8 447 53 99  
info@struers.se

**UNITED KINGDOM**  
**Struers Ltd.**  
Unit 11 Evolution @ AMP  
Whittle Way, Catcliffe  
Rotherham S60 5BL  
Tel.: +44 0845 604 6664  
Fax: +44 0845 604 6651  
info@struers.co.uk

**USA**  
**Struers Inc.**  
24766 Detroit Road  
Westlake, OH 44145-1598  
Tel.: +1 440 871 0071  
Fax: +1 440 871 8188  
info@struers.com

**AUSTRALIA & NEW ZEALAND**  
**Struers Australia**  
27 Mayneview Street  
Milton QLD 4064  
Australia  
Tel.: +61 7 3512 9600  
Fax: +61 7 3369 8200  
info.au@struers.dk

**BELGIUM (Wallonie)**  
**Struers S.A.S.**  
370, rue du Marché Rollay  
F- 94507 Champigny  
sur Marne Cedex  
Tel.: +33 1 5509 1430  
Fax: +33 1 5509 1449  
struers@struers.fr

**BELGIUM (Flanders)**  
**Struers GmbH Nederland**  
Zomerdijk 34 A  
3143 CT Maassluis  
Tel.: +31 (10) 599 7209  
Fax: +31 (10) 5997201  
netherlands@struers.de

**CANADA**  
**Struers Ltd.**  
7275 West Credit Avenue  
Mississauga, Ontario L5N 5M9  
Tel.: +1 905-814-8855  
Fax: +1 905-814-1440  
info@struers.com

**CHINA**  
**Struers Ltd.**  
No. 1696 Zhang Heng Road  
Zhang Jiang Hi-Tech Park  
Shanghai 201203, P.R. China  
Tel.: +86 (21) 6035 3900  
Fax: +86 (21) 6035 3999  
struers@struers.cn

**CZECH REPUBLIC & SLOVAKIA**  
**Struers GmbH Organizační složka**  
vědeckotechnický park  
Přílepská 1920,  
CZ-252 63 Roztoky u Prahy  
Tel.: +420 233 312 625  
Fax: +420 233 312 640  
czechrepublic@struers.de  
slovakia@struers.de

**GERMANY**  
**Struers GmbH**  
Carl-Friedrich-Benz-Straße 5  
D- 47877 Willich  
Tel.: +49 (0) 2154 486-0  
Fax: +49 (0) 2154 486-222  
infoservice@struers.de

**FRANCE**  
**Struers S.A.S.**  
370, rue du Marché Rollay  
F-94507 Champigny  
sur Marne Cedex  
Tel.: +33 1 5509 1430  
Fax: +33 1 5509 1449  
struers@struers.fr

**HUNGARY**  
**Struers GmbH**  
Magyarországi Fióktelep  
2040 Budaörs  
Szabadság utca 117  
Phone +36 (23) 80 60 90  
Fax +36 (23) 80 90 91  
hungary@struers.de

**IRELAND**  
**Struers Ltd.**  
Unit 11 Evolution@ AMP  
Whittle Way, Catcliffe  
Rotherham S60 5BL  
Tel.: +44 0845 604 6664  
Fax: +44 0845 604 6651  
info@struers.co.uk

**ITALY**  
**Struers Italia**  
Via Monte Grappa 80/4  
20020 Arese (MI)  
Tel.: +39-02/38236281  
Fax: +39-02/38236274  
struers.it@struers.it

**JAPAN**  
**Struers K.K.**  
Takanawa Muse Bldg. 1F  
3-14-13 Higashi-Gotanda,  
Shinagawa  
Tokyo  
141-0022 Japan  
Tel.: +81 3 5488 6207  
Fax: +81 3 5488 6237  
struers@struers.co.jp

**NETHERLANDS**  
**Struers GmbH Nederland**  
Zomerdijk 34 A  
3143 CT Maassluis  
Tel.: +31 (10) 599 7209  
Fax: +31 (10) 5997201  
netherlands@struers.de

**NORWAY**  
**Struers ApS, Norge**  
Sjøskogenveien 44C  
1407 Vinterbro  
Tel.: +47 970 94 285  
info@struers.no

**AUSTRIA**  
**Struers GmbH**  
Zweigniederlassung Österreich  
Betriebsgebiet Puch Nord 7  
5412 Puch  
Tel.: +43 6245 70567  
austria@struers.de

**POLAND**  
**Struers Sp. z o.o.**  
Oddział w Polsce  
ul. Jasnogórska 44  
31-358 Kraków  
Tel.: +48 12 661 20 60  
Fax: +48 12 626 01 46  
poland@struers.de

**ROMANIA**  
**Struers GmbH, Sucursala Bucuresti**  
Str. Preciziei nr. 6R  
062203 sector 6, Bucuresti  
Tel.: +40 (31) 101 9548  
Fax: +40 (31) 101 9549  
romania@struers.de

**SWITZERLAND**  
**Struers GmbH**  
Zweigniederlassung Schweiz  
Weissenbrunnenstraße 41  
CH-8903 Birmensdorf  
Tel.: +41 44 777 63 07  
Fax: +41 44 777 63 09  
switzerland@struers.de

## Ensuring Certainty

With offices and affiliates in 24 countries and a presence in more than 50 countries worldwide, Struers is the world's leading materialographic solution supplier. We are dedicated to enabling our customers to ensure certainty in all aspects of materialographic preparation and testing, as well as material hardness testing - wherever they are in the world. Struers offers a complete range of equipment, consumables, service, and training programs – all supported by the most comprehensive knowledge base, global applications support, and a certified global service setup.

## Learn more

Contact a Struers sales representative today or visit [www.struers.com](http://www.struers.com).



**e-Shop**

Buy your consumables  
at Struers e-Shop!  
[e-shop.struers.com](http://e-shop.struers.com)