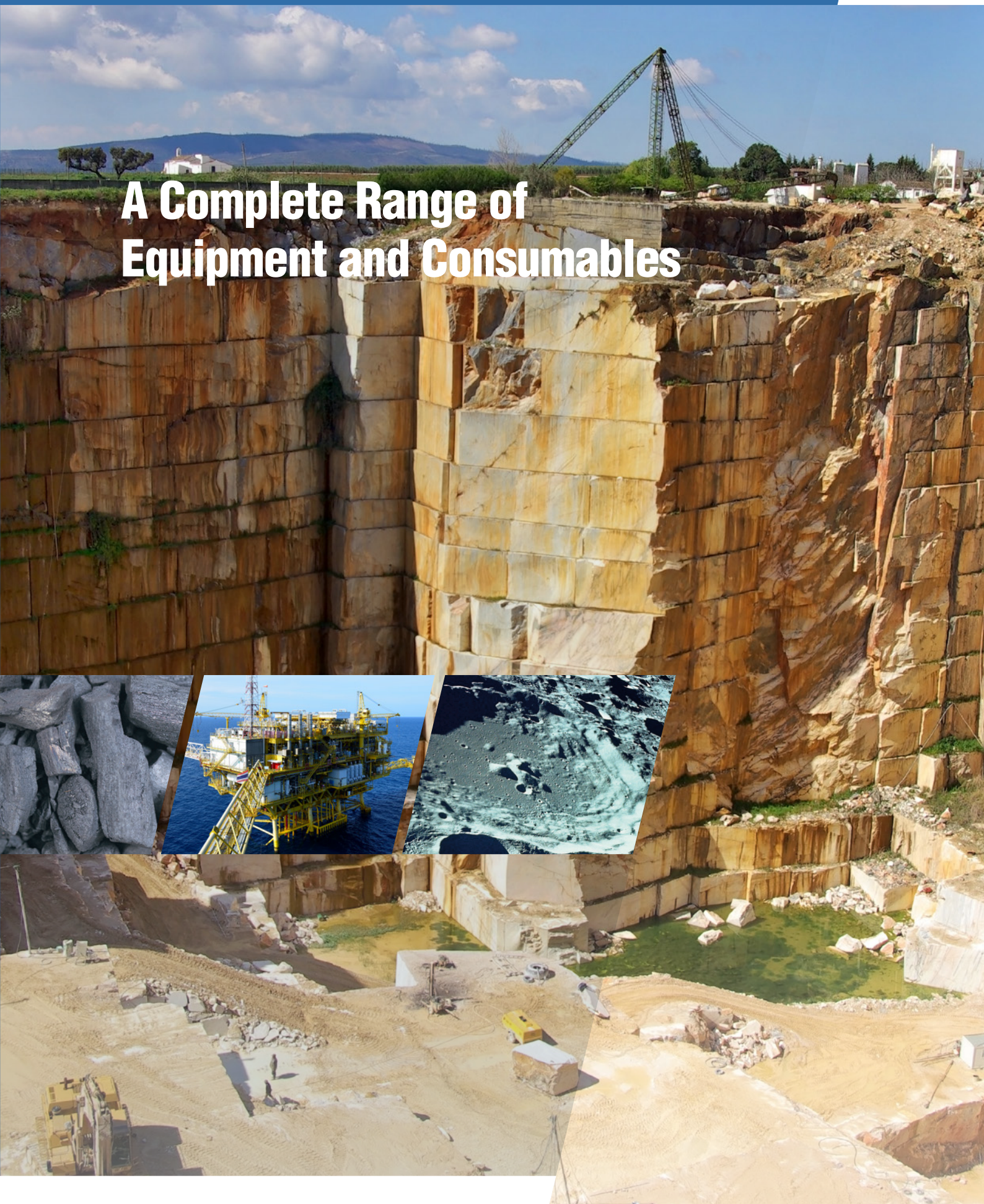


## A Complete Range of Equipment and Consumables





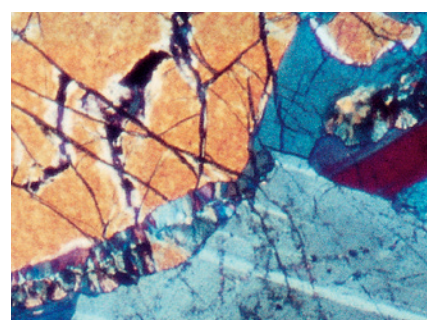
Struers' range of equipment and consumables for the preparation of mineralogical, geological and ceramic specimens covers the entire preparation process – from initial cutting to the finished thin section or polished section, ready for microscopic examination.

**Struers' approach to mineralogy is based on four key points:**

- A thoroughly tested method for the production of thin sections without the need of special skills
- Equipment that is easy to handle
- Cost-efficiency
- Environmental protection

**The preparation of mineralogical, geological and ceramic specimens may be divided into two main groups:**

- Preparation of thin sections or polished thin sections for microscopic examination in transmitted or reflected light
- Preparation of specimens for microscopic examination in reflected light



**Thin Sections**

The production of thin sections requires highly specialized equipment. Struers has developed the TS-Method™, a technique which provides outstanding quality and very high reproducibility - and it is very easy to use.

**Polished Sections**

The preparation of mineralogical specimens for microscopic examination in reflected light is basically similar to the preparation of other materials. After cutting, the specimens are normally mounted in the vacuum impregnation unit CitoVac using EpoFix resin. Lapping is carried out on LaboPol-30/LaboForce-Mi by means of a cast iron lapping disc and the composite disc MD-Largo. The abrasives used are SiC powder and diamonds. Grinding, lapping and polishing can also take place on either semi-automatic or automatic preparation equipment.

**Accutom-100**

World-class precision cutting and grinding table-top machine for delicate applications. Experience efficient precision sectioning with MultiCut allowing for up to 10 identical or different high quality slices in a single workflow combined with very accurate material removal control for perfect grinding planeness. A two-in-one solution for saving time and optimizing your inspection process for higher productivity with a quality output.



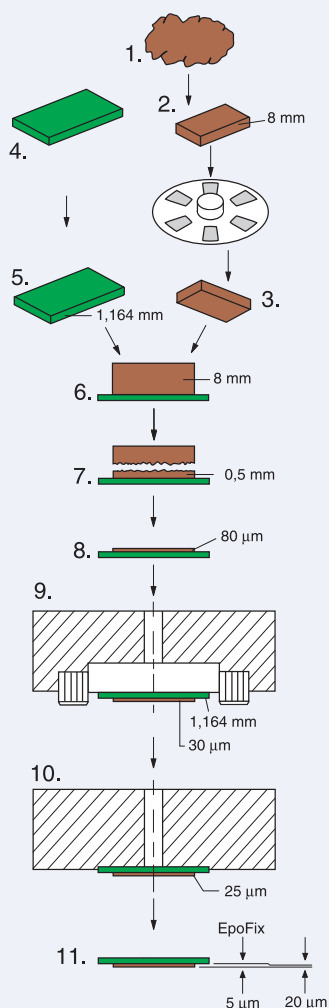
*Grinding with cup-wheel on Accutom-100.*



*Cutting with Accutom-100*

## The TS-Method™ for preparation of thin sections

1. Sampling.
2. Cutting of a specimen on Accutom-100.
3. Automatic lapping of the specimen on LaboPol-30/LaboForce-Mi lapping/polishing machine.
4. Glass slide 27 x 46 mm or 28 x 48 mm.
5. Grinding of glass slide in Accutom-100 to a given thickness, e.g. 1.164 mm.
6. CitoVac vacuum impregnation unit: cementing of specimen to glass slide using EpoFix resin.
7. Accutom-100: cutting off surplus specimen material to a thickness of 0.5-2 mm.
8. Accutom-100: grinding of thin sections to a thickness of 80  $\mu\text{m}$  (section + EpoFix resin).
9. Automatic lapping of thin section in BORTY thin section holder on LaboPol-30/LaboForce-Mi. Final thickness of section + resin e.g. 30  $\mu\text{m}$ .
10. Automatic polishing of thin sections in TYNDS thin section holder on LaboPol-30/LaboForce-Mi. Reduction for a typical polishing: approximately 10  $\mu\text{m}$ .
11. The specimen is now finished. Thickness: 20  $\mu\text{m}$ .

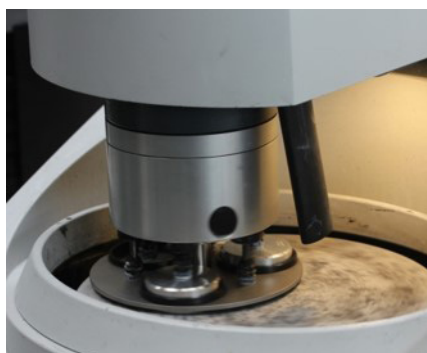


## Outstanding precision

The glass slides are placed on ceramic vacuum holders and are then moved across a cup wheel with diamonds. The slides or specimens may be ground with an accuracy of  $\pm 2 \mu\text{m}$  in a couple of minutes. The ceramic vacuum holder allows for dressing of the cup wheel. This feature is important to ensure absolute precision.

## Accutom-100 – precision cutting and grinding

For automatic preparation of thin sections the Accutom-100 can be used. Movement of the specimen is controlled automatically and positioning accuracy is 5  $\mu\text{m}$ .



Polishing with TYNDS on Tegramin-30.

## Automatic lapping and polishing of thin sections

Sections cut to a standard size on Accutom-100, are lapped automatically on LaboPol-30/LaboForce-Mi – up to eight sections at a time. Subsequently, they are glued to a glass slide, then cut and ground on Accutom-100.



LaboForce-Mi is a semi-automatic specimen mover for the production of thin sections, polished thin sections and polished specimens of mineralogical materials. The force is applied through springs which can be individually adjusted

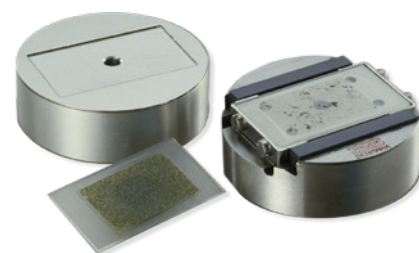
To achieve the final thickness (e.g. 20  $\mu\text{m}$ ), the sections are now lapped and polished on LaboPol-30/LaboForce-Mi: the specimens are placed either in a BORTY thin section holder for lapping or in a TYNDS thin section holder for polishing. Due to the automated preparation process the specimens are prepared with very high reproducibility.

## Thin section holders

Thin section holders are indispensable tools in rational precision lapping and polishing of thin sections. Struers' thin section holders ensure plane specimens of perfect surface quality and well defined and uniform thickness.

## Thin section holders for polishing

As diamond is used for polishing the thin sections, BORTY can not be used as diamond also removes material from the boron carbide sticks. Therefore a holder which does not touch the polishing cloth must be used. The TYNDS thin section holders are designed to solve this problem. They have the same outer dimensions as the BORTY holders. Consequently, they can be used on the same equipment with the same specimen mover disc that has already been used for precision lapping. The holders ensure excellent polishing.



Thin section holders for lapping and polishing

## Precision lapping holders

The BORTY thin section holders are provided with very hard sticks of boron carbide ( $\text{B}_4\text{C}$ ) which stop any further material removal when they make contact with the lapping disc.



## Preparation discs and lapping powders

### Cast iron lapping disc

A cast iron disc (300 mm) for lapping is available. The disc is made of a special cast iron alloy which will resist long-term influence from SiC grains, regardless of grain size.



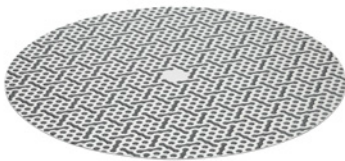
### Lapping powders

Lapping on cast iron discs is carried out with SiC powder. A wide range of grain sizes is available.



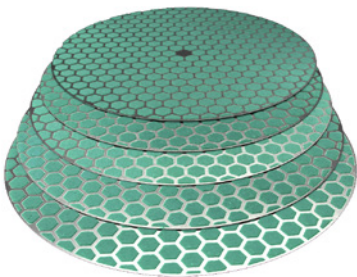
### MD-Piano

For fast removal of material, grinding can be carried out using MD-Piano, a diamond grinding disc.



### MD-Largo

MD-Largo is a composite disc for fine grinding. The special formulation of the composite material together with the use of diamonds as abrasive guarantees a uniform removal of material from different phases without smearing, deformation or chipping. The specimens will maintain a perfect planeness.



### CitoVac

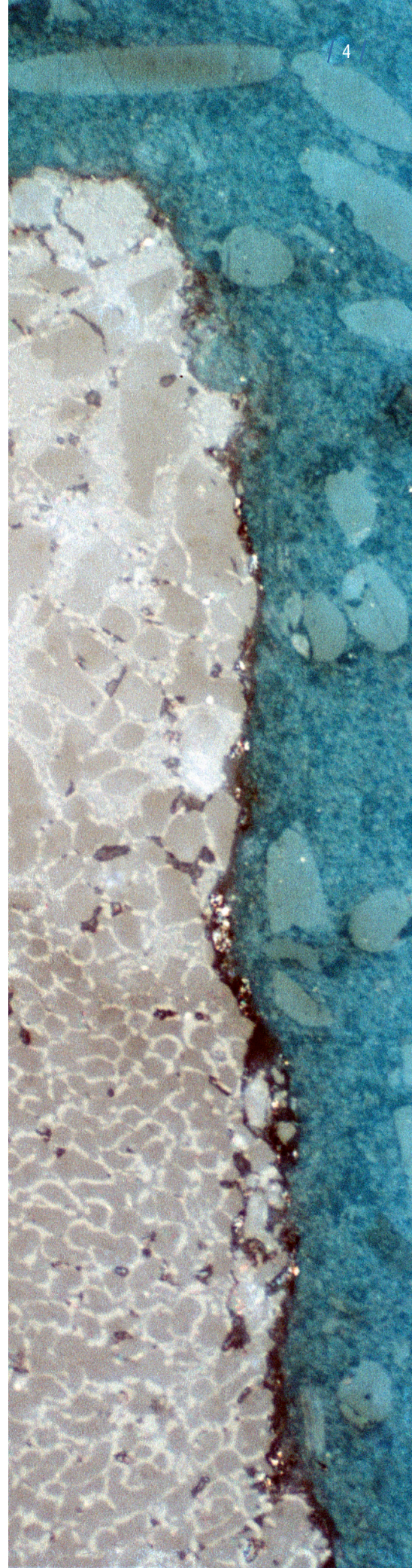
CitoVac is a vacuum impregnation unit, especially designed for mounting and impregnating of porous materials. It is also very well suited for gluing specimens to glass slides for the production of thin sections.



*A special lid has to be used when gluing specimens to glass slides with the CitoVac.*

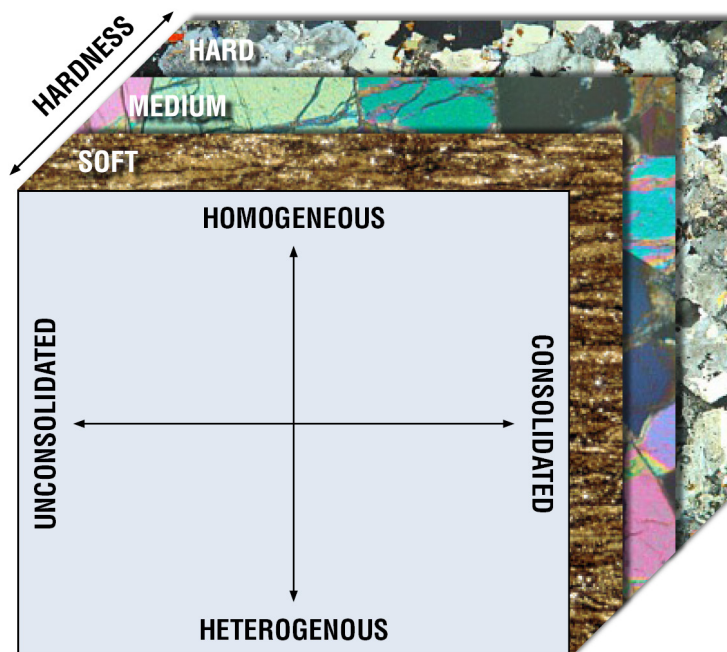


*Easy filling of mounting cups.*



# Mineralogy Methods Cube

Mineralogical specimens are often hard, brittle, porous, and inhomogeneous. They can contain extremely hard and soft phases that require accessories specially developed for these materials.



## Struers Mineralogram – “Mineralogy Methods Cube”

The Methods Cube covers standard thin section preparation methods for a wide range of minerals. It was developed in collaboration with GEUS (The Geological Survey of Denmark and Greenland).



**Want to know more?**

### Visualization of our Cube:

Along with GEUS, it was determined that a cube would provide the best representation of mineral properties. The cube is divided into three two-dimensional squares to make it easy to work with and understand.

The hardness of rock is a term that can be difficult to handle, because rocks are a kind of “composite” (and a mix of minerals with potentially different hardnesses). Important rock parameters, both alone and in combination with others, are internal structure (column equality, slate-like cleavage), and the extent to which the rock has been subject to pressure, and/or (partially) converted by various liquids or molten rock.

A rock may encounter isotropic properties that must be assessed for each specimen by looking at the mineral along with the general structure of the rock, and considering whether there are other conditions that may affect the hardness.



**Struers ApS**  
Pederstrupvej 84  
DK-2750 Ballerup, Denmark

Phone +45 44 600 800  
Fax +45 44 600 801  
struers@struers.dk  
www.struers.com

**SINGAPORE**  
**Struers Singapore**  
627A Aljunied Road,  
#07-08 BizTech Centre  
Singapore 389842  
Tel.: +65 6299 2268  
Fax: +65 6299 2661  
struers.sg@struers.dk

**SPAIN**  
**Struers España**  
Camino Cerro de los Gamos 1  
Building 1 - Pozuelo de Alarcón  
CP 28224 Madrid  
Tel.: +34 917 901 204  
Fax: +34 917 901 112  
struers.es@struers.es

**FINLAND**  
**Struers ApS Suomi**  
Sahaajankatu 20-22 A6  
00880 Helsinki  
Tel.: +358 (0)207 919 430  
finland@struers.fi

**SWEDEN**  
**Struers Sverige**  
Box 20038  
161 02 Bromma  
Tel.: +46 (0)8 447 53 90  
Fax: +46 (0)8 447 53 99  
info@struers.se

**UNITED KINGDOM**  
**Struers Ltd.**  
Unit 11 Evolution @ AMP  
Whittle Way, Catcliffe  
Rotherham S60 5BL  
Tel.: +44 0845 604 6664  
Fax: +44 0845 604 6651  
info@struers.co.uk

**USA**  
**Struers Inc.**  
24766 Detroit Road  
Westlake, OH 44145-1598  
Tel.: +1 440 871 0071  
Fax: +1 440 871 8188  
info@struers.com

**AUSTRALIA & NEW ZEALAND**  
**Struers Australia**  
27 Mayneview Street  
Milton QLD 4064  
Australia  
Tel.: +61 7 3512 9600  
Fax: +61 7 3369 8200  
info.au@struers.dk

**BELGIUM (Wallonie)**  
**Struers S.A.S.**  
370, rue du Marché Rollay  
F- 94507 Champigny  
sur Marne Cedex  
Tel.: +33 1 5509 1430  
Fax: +33 1 5509 1449  
struers@struers.fr

**BELGIUM (Flanders)**  
**Struers GmbH Nederland**  
Zomerdijk 34 A  
3143 CT Maassluis  
Tel.: +31 (10) 599 7209  
Fax: +31 (10) 5997201  
netherlands@struers.de

**CANADA**  
**Struers Ltd.**  
7275 West Credit Avenue  
Mississauga, Ontario L5N 5M9  
Tel.: +1 905-814-8855  
Fax: +1 905-814-1440  
info@struers.com

**CHINA**  
**Struers Ltd.**  
No. 1696 Zhang Heng Road  
Zhang Jiang Hi-Tech Park  
Shanghai 201203, P.R. China  
Tel.: +86 (21) 6035 3900  
Fax: +86 (21) 6035 3999  
struers@struers.cn

**CZECH REPUBLIC & SLOVAKIA**  
**Struers GmbH Organizační složka**  
vědeckotechnický park  
Přílepská 1920,  
CZ-252 63 Roztoky u Prahy  
Tel.: +420 233 312 625  
Fax: +420 233 312 640  
czechrepublic@struers.de  
slovakia@struers.de

**GERMANY**  
**Struers GmbH**  
Carl-Friedrich-Benz-Straße 5  
D- 47877 Willich  
Tel.: +49 (0) 2154 486-0  
Fax: +49 (0) 2154 486-222  
infoservice@struers.de

**FRANCE**  
**Struers S.A.S.**  
370, rue du Marché Rollay  
F-94507 Champigny  
sur Marne Cedex  
Tel.: +33 1 5509 1430  
Fax: +33 1 5509 1449  
struers@struers.fr

**HUNGARY**  
**Struers GmbH**  
Magyarország Fióktelep  
2040 Budaörs  
Szabadság utca 117  
Phone +36 (23) 80 60 90  
Fax +36 (23) 80 90 91  
hungary@struers.de

**IRELAND**  
**Struers Ltd.**  
Unit 11 Evolution@ AMP  
Whittle Way, Catcliffe  
Rotherham S60 5BL  
Tel.: +44 0845 604 6664  
Fax: +44 0845 604 6651  
info@struers.co.uk

**ITALY**  
**Struers Italia**  
Via Monte Grappa 80/4  
20020 Arese (MI)  
Tel.: +39-02/38236281  
Fax: +39-02/38236274  
struers.it@struers.it

**JAPAN**  
**Struers K.K.**  
Takanawa Muse Bldg. 1F  
3-14-13 Higashi-Gotanda,  
Shinagawa  
Tokyo  
141-0022 Japan  
Tel.: +81 3 5488 6207  
Fax: +81 3 5488 6237  
struers@struers.co.jp

**NETHERLANDS**  
**Struers GmbH Nederland**  
Zomerdijk 34 A  
3143 CT Maassluis  
Tel.: +31 (10) 599 7209  
Fax: +31 (10) 5997201  
netherlands@struers.de

**NORWAY**  
**Struers ApS, Norge**  
Sjøskogenveien 44C  
1407 Vinterbro  
Tel.: +47 970 94 285  
info@struers.no

**AUSTRIA**  
**Struers GmbH**  
Zweigniederlassung Österreich  
Betriebsgebiet Puch Nord 7  
5412 Puch  
Tel.: +43 6245 70567  
austria@struers.de

**POLAND**  
**Struers Sp. z o.o.**  
Oddział w Polsce  
ul. Jasnogórska 44  
31-358 Kraków  
Tel.: +48 12 661 20 60  
Fax: +48 12 626 01 46  
poland@struers.de

**ROMANIA**  
**Struers GmbH, Sucursala Bucuresti**  
Str. Preciziei nr. 6R  
062203 sector 6, Bucuresti  
Tel.: +40 (31) 101 9548  
Fax: +40 (31) 101 9549  
romania@struers.de

**SWITZERLAND**  
**Struers GmbH**  
Zweigniederlassung Schweiz  
Weissenbrunnstraße 41  
CH-8903 Birmensdorf  
Tel.: +41 44 777 63 07  
Fax: +41 44 777 63 09  
switzerland@struers.de

## Ensuring Certainty

With offices and affiliates in 24 countries and a presence in more than 50 countries worldwide, Struers is the world's leading materialographic solution supplier. We are dedicated to enabling our customers to ensure certainty in all aspects of materialographic preparation and testing as well as material hardness testing - wherever they are in the world. Struers offers a complete range of equipment, consumables, service and training programmes – all supported by the most comprehensive knowledge base, global applications support and a certified global service set-up.

## Learn more

Contact a Struers sales representative today or visit [www.struers.com](http://www.struers.com)



**e-Shop**

Buy your consumables  
in Struers e-Shop!  
[e-shop.struers.com](http://e-shop.struers.com)